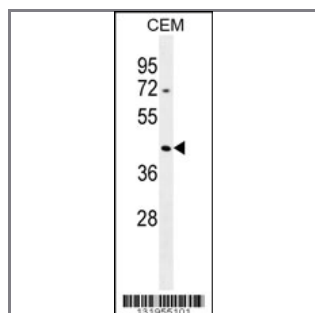


ACTBL3 Antibody (N-term)

Peptide Affinity Purified Rabbit Polyclonal Antibody (Pab)

Catalog #	Applications:	Reactivity:	Accessions:
AP12154a	WB, E	H	Q9BYX7
Concentration:	Size:	Isotype:	Clone Name:
0.25 mg/ml	0.1 mg	Rabbit Ig	RB31955

Application Data:
Calculated MW: 42016 Da


ACTBL3 Antibody (N-term) (Cat. #AP12154a) western blot analysis in CEM cell line lysates (35ug/lane). This demonstrates the ACTBL3 antibody detected the ACTBL3 protein (arrow).

Gene ID:	Gene Symbol:
440915	POTEKP

Other Names:

POTEKP, Putative beta-actin-like protein 3, ACTBL3

Target/Specificity:

This ACTBL3 antibody is generated from rabbits immunized with a KLH conjugated synthetic peptide between 37-66 amino acids from the N-terminal region of human ACTBL3.

Application Notes:

The suggested dilution is:

ELISA 1:1,000

Western blotting 1:100~500

Format:

Purified polyclonal antibody supplied in PBS with 0.09% (W/V) sodium azide. This antibody is purified through a protein A column, followed by peptide affinity purification.

Storage:

Maintain refrigerated at 2-8°C for up to 6 months. For long term storage store at -20°C in

small aliquots to prevent freeze-thaw cycles.

Precautions:

ACTBL3 Antibody (N-term) is for research use only and not for use in diagnostic or therapeutic procedures.
