

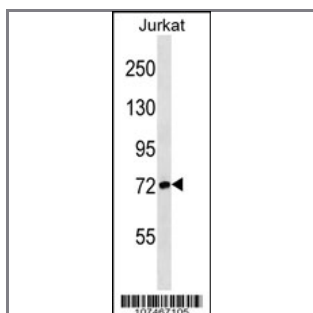
## ATG7 Antibody (N-term)

### Purified Rabbit Polyclonal Antibody (Pab)

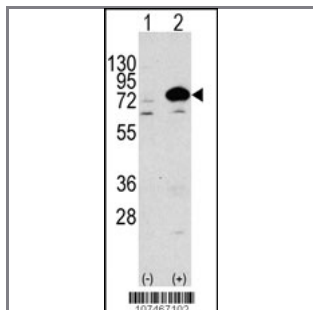
| Catalog #      | Applications: | Reactivity: | Accessions:            |
|----------------|---------------|-------------|------------------------|
| AP1813a        | WB, IHC, E    | H, M, R*    | <a href="#">O95352</a> |
| Concentration: | Size:         | Isotype:    | Clone Name:            |
| 0.25 mg/ml     | 0.1 mg        | Rabbit Ig   | RB7467                 |

#### Application Data:

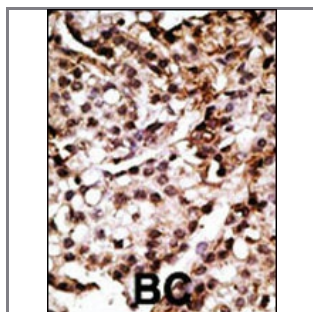
**Calculated MW: 77960 Da**



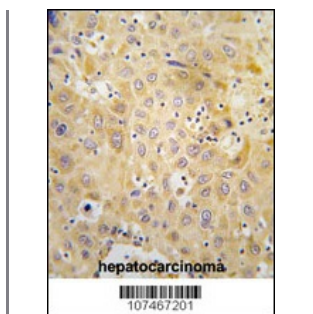
APG7L Antibody (E37) (Cat. #AP1813a) western blot analysis in Jurkat cell line lysates (35ug/lane). This demonstrates the APG7L antibody detected the APG7L protein (arrow).



Western blot analysis of anti-Autophagy APG7L Antibody (N-term) (Cat. #AP1813a) in 293 cell line lysates transiently transfected with the ATG7 gene (3ug/lane). APG7L (arrow) was detected using the purified Pab.



Formalin-fixed and paraffin-embedded human cancer tissue reacted with the primary antibody, which was peroxidase-conjugated to the secondary antibody, followed by AEC staining. This data demonstrates the use of this antibody for immunohistochemistry; clinical relevance has not been evaluated. BC = breast carcinoma; HC = hepatocarcinoma.



Formalin-fixed and paraffin-embedded human hepatocarcinoma tissue reacted with Autophagy APG7L Antibody (N-term) (Cat.#AP1813a), which was peroxidase-conjugated to the secondary antibody, followed by DAB staining. This data demonstrates the use of this antibody for immunohistochemistry; clinical relevance has not been evaluated.

---

**Gene ID:**

10533

**Gene Symbol:**

ATG7

---

**Other Names:**

APG7L, Ubiquitin-like modifier-activating enzyme ATG7, ATG12-activating enzyme E1 ATG7, Autophagy-related protein 7

---

**Target/Specificity:**

This ATG7 antibody is generated from rabbits immunized with a KLH conjugated synthetic peptide between 29~59 amino acids from the N-term of human APG7L.

---

**Application Notes:**

The suggested dilution is:

ELISA 1:1,000

Western blotting 1:100~500

Immunohistochemistry 1:50~100

---

**Format:**

Purified polyclonal antibody supplied in PBS with 0.09% (W/V) sodium azide. This antibody is prepared by Saturated Ammonium Sulfate (SAS) precipitation followed by dialysis against PBS.

---

**Storage:**

Maintain refrigerated at 2-8°C for up to 6 months. For long term storage store at -20°C in small aliquots to prevent freeze-thaw cycles.

---

**Precautions:**

ATG7 Antibody (N-term) is for research use only and not for use in diagnostic or therapeutic procedures.

---