

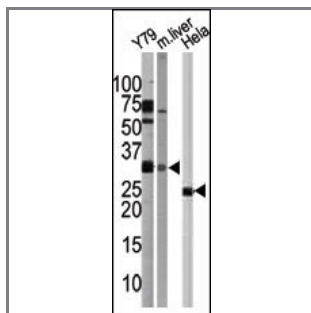
ATG5 Antibody (C-term)

Purified Rabbit Polyclonal Antibody (Pab)

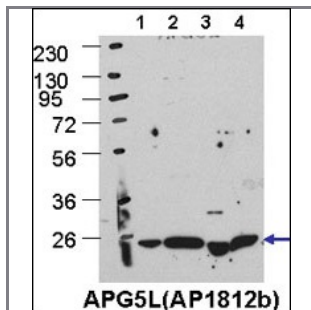
Catalog #	Applications:	Reactivity:	Accessions:
AP1812b	WB, IHC, E	H, M	Q9H1Y0

Concentration:	Size:	Isotype:	Clone Name:
0.25 mg/ml	0.1 mg	Rabbit Ig	RB7547

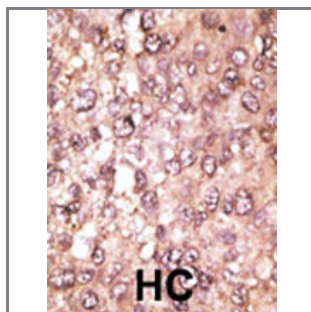
Application Data: Calculated MW: 32447 Da



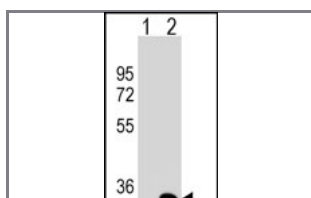
Western blot analysis of APG5L Pab in Y79, mouse liver, and HeLa tissue lysates (Cat. #AP1812b).



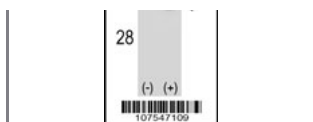
Cos7, HEK293, MEF, and HeLa cells left to right, respectively. Data courtesy of Drs. Jiefei Geng and Dan Klionsky, University of Michigan.



Formalin-fixed and paraffin-embedded human cancer tissue reacted with the primary antibody, which was peroxidase-conjugated to the secondary antibody, followed by DAB staining. This data demonstrates the use of this antibody for immunohistochemistry; clinical relevance has not been evaluated. BC = breast carcinoma; HC = hepatocarcinoma.



Western blot analysis of APG5L (arrow) using rabbit polyclonal APG5L Antibody (P224) (Cat. #AP1812b). 293 cell lysates (2 ug/lane) either nontransfected (Lane 1) or transiently transfected (Lane 2) with the APG5L



gene.

Gene ID:

9474

Gene Symbol:

ATG5

Other Names:

APG5, APG5-LIKE, APG5L, ASP, hAPG5, APG5 (autophagy 5, *S. cerevisiae*)-like; APG5 autophagy 5-like; ATG5 autophagy related 5-like; OTTHUMP00000017824; apoptosis specific protein; apoptosis-specific protein; autophagy protein 5

Target/Specificity:

This ATG5 antibody is generated from rabbits immunized with a KLH conjugated synthetic peptide between 216~246 amino acids from the C-term of human APG5L.

Application Notes:

The suggested dilution is:

ELISA 1:1,000

Western blotting 1:100~500

Immunohistochemistry 1:50~100

Format:

Purified polyclonal antibody supplied in PBS with 0.09% (W/V) sodium azide. This antibody is prepared by Saturated Ammonium Sulfate (SAS) precipitation followed by dialysis against PBS.

Storage:

Maintain refrigerated at 2-8°C for up to 6 months. For long term storage store at -20°C in small aliquots to prevent freeze-thaw cycles.

Precautions:

ATG5 Antibody (C-term) is for research use only and not for use in diagnostic or therapeutic procedures.
