

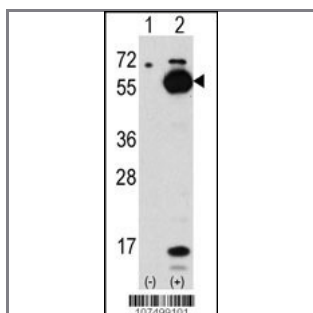
ATG4C Antibody (C-term)

Purified Rabbit Polyclonal Antibody (Pab)

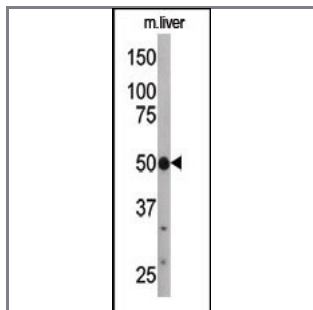
Catalog #	Applications:	Reactivity:	Accessions:
AP1810c	WB, IHC, E	H, M	Q96DT6
Concentration:	Size:	Isotype:	Clone Name:
0.25 mg/ml	0.1 mg	Rabbit Ig	RB7499

Application Data:

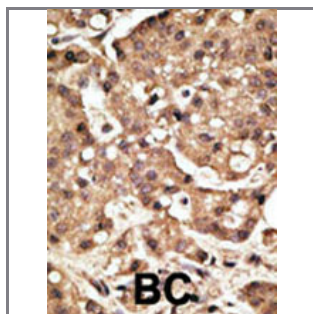
Calculated MW: 52497 Da



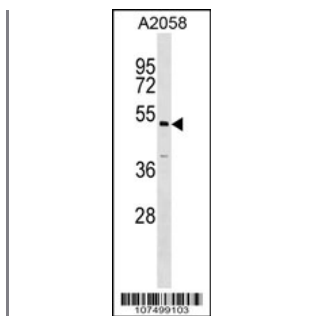
Western blot analysis of anti-hAPG4C-N434 Pab (Cat. #AP1810c) in 293 cell line lysates transiently transfected with the ATG4C gene (2ug/lane). hAPG4C-N434 (arrow) was detected using the purified Pab (1:60 dilution).



The anti-APG4C Pab (Cat. #AP1810c) is used in Western blot to detect APG4C in mouse liver tissue lysate.



Formalin-fixed and paraffin-embedded human cancer tissue reacted with the primary antibody, which was peroxidase-conjugated to the secondary antibody, followed by AEC staining. This data demonstrates the use of this antibody for immunohistochemistry; clinical relevance has not been evaluated. BC = breast carcinoma; HC = hepatocarcinoma.



APG4C Antibody (C-term) (Cat. #AP1810c) western blot analysis in A2058 cell line lysates (35ug/lane). This demonstrates the APG4C antibody detected the APG4C protein (arrow).

Gene ID:

84938

Gene Symbol:

ATG4C

Other Names:

APG4-C, APG4C, AUTL1, AUTL3, FLJ14867, APG4 autophagy 4 homolog C; AUT-like 1, cysteine endopeptidase; AUT-like 3 cysteine endopeptidase; autophagin-3; autophagy-related cysteine endopeptidase 3; autophagy-related protein 4 homolog C; cysteine protease ATG4C

Target/Specificity:

This ATG4C antibody is generated from rabbits immunized with a KLH conjugated synthetic peptide between 426~456 amino acids from the C-term of human APG4C.

Application Notes:

The suggested dilution is:

ELISA 1:1,000

Western blotting 1:100~500

Immunohistochemistry 1:50~100

Format:

Purified polyclonal antibody supplied in PBS with 0.09% (W/V) sodium azide. This antibody is prepared by Saturated Ammonium Sulfate (SAS) precipitation followed by dialysis against PBS.

Storage:

Maintain refrigerated at 2-8°C for up to 6 months. For long term storage store at -20°C in small aliquots to prevent freeze-thaw cycles.

Precautions:

ATG4C Antibody (C-term) is for research use only and not for use in diagnostic or therapeutic procedures.
