

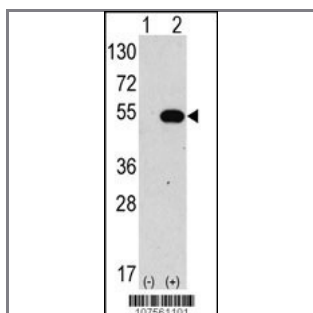
## ATG4C Antibody (N-term)

### Purified Rabbit Polyclonal Antibody (Pab)

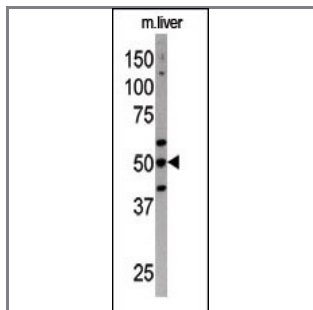
Catalog #	Applications:	Reactivity:	Accessions:
AP1810a	WB, IHC, E	H, M	<a href="#">Q96DT6</a>
Concentration:	Size:	Isotype:	Clone Name:
0.25 mg/ml	0.1 mg	Rabbit Ig	RB7561

#### Application Data:

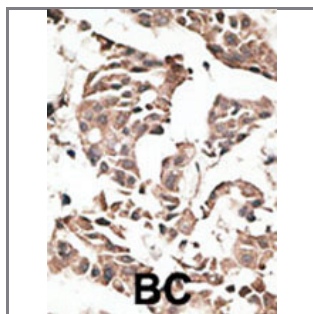
**Calculated MW: 52497 Da**



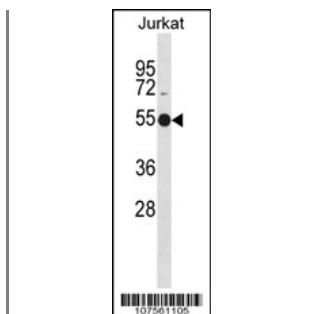
Western blot analysis of anti-hAPG4C-Y48 Pab (Cat. #AP1810a) in 293 cell line lysates transiently transfected with the ATG4C gene (2ug/lane). hAPG4C-Y48 (arrow) was detected using the purified Pab (1:60 dilution).



The anti-APG4C Pab (Cat. #AP1810a) is used in Western blot to detect APG4C in mouse liver tissue lysate



Formalin-fixed and paraffin-embedded human cancer tissue reacted with the primary antibody, which was peroxidase-conjugated to the secondary antibody, followed by AEC staining. This data demonstrates the use of this antibody for immunohistochemistry; clinical relevance has not been evaluated. BC = breast carcinoma; HC = hepatocarcinoma.



APG4C Antibody (Y48) (Cat. #AP1810a) western blot analysis in Jurkat cell line lysates (35ug/lane). This demonstrates the APG4C antibody detected the APG4C protein (arrow).

---

**Gene ID:**

84938

**Gene Symbol:**

ATG4C

---

**Other Names:**

APG4-C, APG4C, AUTL1, AUTL3, FLJ14867, APG4 autophagy 4 homolog C; AUT-like 1, cysteine endopeptidase; AUT-like 3 cysteine endopeptidase; autophagin-3; autophagy-related cysteine endopeptidase 3; autophagy-related protein 4 homolog C; cysteine protease ATG4C

---

**Target/Specificity:**

This ATG4C antibody is generated from rabbits immunized with a KLH conjugated synthetic peptide between 40~70 amino acids from the N-term of human APG4C.

---

**Application Notes:**

The suggested dilution is:

ELISA 1:1,000

Western blotting 1:100~500

Immunohistochemistry 1:50~100

---

**Format:**

Purified polyclonal antibody supplied in PBS with 0.09% (W/V) sodium azide. This antibody is prepared by Saturated Ammonium Sulfate (SAS) precipitation followed by dialysis against PBS.

---

**Storage:**

Maintain refrigerated at 2-8°C for up to 6 months. For long term storage store at -20°C in small aliquots to prevent freeze-thaw cycles.

---

**Precautions:**

ATG4C Antibody (N-term) is for research use only and not for use in diagnostic or therapeutic procedures.

---