

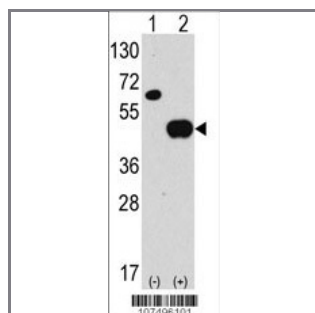
ATG4B Antibody (N-term)

Purified Rabbit Polyclonal Antibody (Pab)

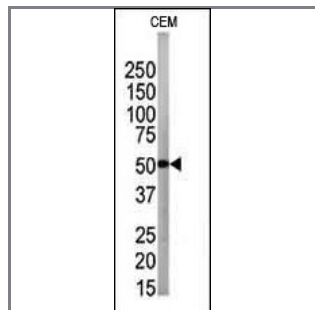
Catalog #	Applications:	Reactivity:	Accessions:
AP1809a	WB, IHC, E	H, M	Q9Y4P1
Concentration:	Size:	Isotype:	Clone Name:
0.25 mg/ml	0.1 mg	Rabbit Ig	RB7496

Application Data:

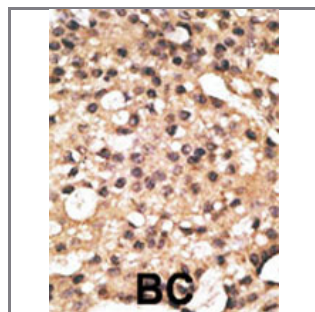
Calculated MW: 44309 Da



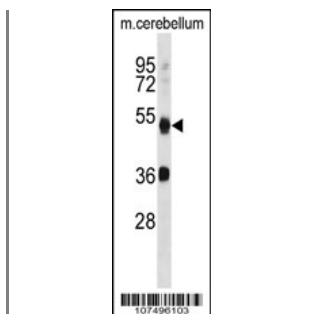
Western blot analysis of anti-hAPG4B-R31 Pab (Cat. #AP1809a) in 293 cell line lysates transiently transfected with the ATG4B gene (2ug/lane). hAPG4B-R31 (arrow) was detected using the purified Pab (1:60 dilution).



The anti-APG4B Pab (Cat. #AP1809a) is used in Western blot to detect APG4B in CEM tissue lysate



Formalin-fixed and paraffin-embedded human cancer tissue reacted with the primary antibody, which was peroxidase-conjugated to the secondary antibody, followed by DAB staining. This data demonstrates the use of this antibody for immunohistochemistry; clinical relevance has not been evaluated. BC = breast carcinoma; HC = hepatocarcinoma.



APG4B Antibody (R31) (Cat. #AP1809a) western blot analysis in mouse cerebellum tissue lysates (35ug/lane). This demonstrates the APG4B antibody detected the APG4B protein (arrow).

Gene ID:

23192

Gene Symbol:

ATG4B

Other Names:

APG4B, AUTL1, MGC1353, APG4 autophagy 4 homolog B; AUT-like 1 cysteine endopeptidase; autophagin-1; autophagy-related cysteine endopeptidase 1; autophagy-related protein 4 homolog B; cysteine protease ATG4B; hAPG4B

Target/Specificity:

This ATG4B antibody is generated from rabbits immunized with a KLH conjugated synthetic peptide between 23~53 amino acids from the N-terminal region of human APG4B.

Application Notes:

The suggested dilution is:

ELISA 1:1,000

Western blotting 1:100~500

Immunohistochemistry 1:50~100

Format:

Purified polyclonal antibody supplied in PBS with 0.09% (W/V) sodium azide. This antibody is prepared by Saturated Ammonium Sulfate (SAS) precipitation followed by dialysis against PBS.

Storage:

Maintain refrigerated at 2-8°C for up to 6 months. For long term storage store at -20°C in small aliquots to prevent freeze-thaw cycles.

Precautions:

ATG4B Antibody (N-term) is for research use only and not for use in diagnostic or therapeutic procedures.
