

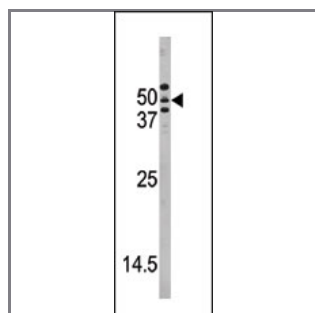
ATG4A Antibody

Purified Rabbit Polyclonal Antibody (Pab)

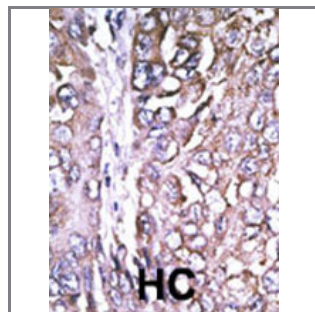
Catalog #	Applications:	Reactivity:	Accessions:
AP1808b	WB, IHC, E	H, B*	Q8WYN0
Concentration:	Size:	Isotype:	Clone Name:
0.25 mg/ml	0.1 mg	Rabbit Ig	RB7553

Application Data:

Calculated MW: 45378 Da



Western blot analysis of anti-APG4A Pab (Cat. #AP1808b) in HepG2 cell line lysate. APG4A (arrow) was detected using the purified Pab.



Formalin-fixed and paraffin-embedded human cancer tissue reacted with the primary antibody, which was peroxidase-conjugated to the secondary antibody, followed by AEC staining. This data demonstrates the use of this antibody for immunohistochemistry; clinical relevance has not been evaluated. BC = breast carcinoma; HC = hepatocarcinoma.

Gene ID:	Gene Symbol:
115201	ATG4A

Other Names:

RP5-889N15.2, APG4A, AUTL2, APG4 autophagy 4 homolog A; AUT-like 2 cysteine endopeptidase; AUT-like 2, cysteine endopeptidase; autophagin 2; autophagin-2; autophagy-related cysteine endopeptidase 2; autophagy-related protein 4 homolog A; cysteine protease ATG4A; hAPG4A

Target/Specificity:

This ATG4A antibody is generated from rabbits immunized with a KLH conjugated synthetic peptide between 89~119 amino acids from the Center of human APG4A.

Application Notes:

The suggested dilution is:

ELISA 1:1,000

Western blotting 1:100~500

Immunohistochemistry 1:50~100

Format:

Purified polyclonal antibody supplied in PBS with 0.09% (W/V) sodium azide. This antibody is prepared by Saturated Ammonium Sulfate (SAS) precipitation followed by dialysis against PBS.

Storage:

Maintain refrigerated at 2-8°C for up to 6 months. For long term storage store at -20°C in small aliquots to prevent freeze-thaw cycles.

Precautions:

ATG4A Antibody is for research use only and not for use in diagnostic or therapeutic procedures.
