

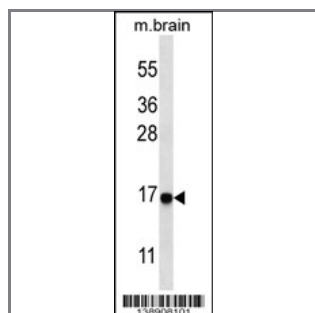
## Cleaved LC3A Antibody

### Peptide Affinity Purified Rabbit Polyclonal Antibody (Pab)

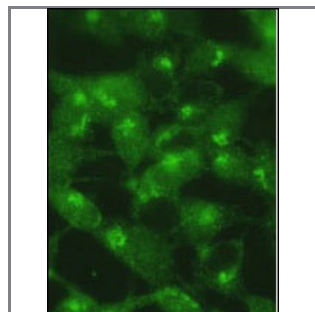
Catalog #	Applications:	Reactivity:	Accessions:
AP1805a	WB, ICC, IHC, E	H, M, B*, C*, Pr*, R*, Z*	<a href="#">Q9H492</a>
Concentration:	Size:	Isotype:	Clone Name:
0.25 mg/ml	0.1 mg	Rabbit Ig	RB38908

#### Application Data:

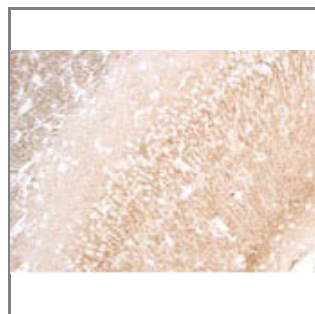
**Calculated MW: 14272 Da**



Western blot analysis of anti-cleaved-LC3 (APG8a) Pab (Cat. #AP1805a) in mouse brain tissue lysate. Cleaved-LC3 (APG8a) was detected using the purified Pab.



SY5Y cells were pretreated with 5nM bafilomycin for 24hr and fixed in 4% of paraformaldehyde. Treatment with Cat# AP1805a antibody at dilution 1:100. Data courtesy of Jianhui Zhu, MD, PhD & Charleen T. Chu, MD, PhD, University of Pittsburgh School of Medicine.



Formalin-fixed and paraffin-embedded human cancer tissue reacted with the primary antibody, which was peroxidase-conjugated to the secondary antibody, followed by DAB staining. This data demonstrates the use of this antibody for immunohistochemistry; clinical relevance has not been evaluated. BC = breast carcinoma; HC = hepatocarcinoma.

Gene ID:	Gene Symbol:
<a href="#">84557</a>	MAP1LC3A

#### Other Names:

MAP1LC3A, microtubule-associated protein 1 light chain 3 alpha, RP11-346K17.1, LC3, LC3A, MAP1ALC3, MAP1BLC3, MAP1 light chain 3-like protein 1; MAP1A/1B light chain 3 A; MAP1A/MAP1B LC3 A; MAP1A/MAP1B light chain 3 A; OTTHUMP00000030698; autophagy-related protein LC3 A; autophagy-related ubiquitin-like modifier LC3 A; microtubule-associated proteins 1A/1B light chain 3; microtubule-associated proteins 1A/1B light chain 3A,

---

**Target/Specificity:**

This Cleaved LC3A antibody is generated from rabbits immunized with a KLH conjugated synthetic peptide between 97~120 amino acids from the C-terminal cleavage site of human cleaved-LC3 (APG8a).

---

**Application Notes:**

The suggested dilution is:

ELISA 1:1,000

Western blotting 1:100~500

Immunohistochemistry 1:100

Immunocytochemistry 1:50~100

---

**Format:**

Purified polyclonal antibody supplied in PBS with 0.09% (W/V) sodium azide. This antibody is prepared by Saturated Ammonium Sulfate (SAS) precipitation followed by dialysis against PBS.

---

**Storage:**

Maintain refrigerated at 2-8°C for up to 6 months. For long term storage store at -20°C in small aliquots to prevent freeze-thaw cycles.

---

**Precautions:**

Cleaved LC3A Antibody is for research use only and not for use in diagnostic or therapeutic procedures.

---