



Anti-RAT IgG (H&L) (GOAT) Antibody (Min X Bv Ch Gt GP Ham Hs Hu Ms Rb & Sh Serum Proteins) - 612-101-120

Code: 612-101-120

Size: 1 mg

Product Description: Anti-RAT IgG (H&L) (GOAT) Antibody (Min X Bv Ch Gt GP Ham Hs Hu Ms Rb & Sh Serum Proteins) - 612-101-120

Concentration: 1.06 mg/mL by UV absorbance at 280 nm

PhysicalState: Liquid (sterile filtered)

Label	Unconjugated
Host	Goat
Species Reactivity	Rat
Buffer	0.02 M Potassium Phosphate, 0.15 M Sodium Chloride, pH 7.2
Stabilizer	None
Preservative	0.01% (w/v) Sodium Azide
Storage Condition	Store vial at 4° C prior to opening. This product is stable for several weeks at 4° C as an undiluted liquid. Dilute only prior to immediate use. For extended storage aliquot contents and freeze at -20° C or below. Avoid cycles of freezing and thawing.
Synonyms	Goat anti-Rat, Rat IgG Secondary Antibody, Rat Ab in Goat
Application Note	Anti-RAT IgG (H&L) (GOAT) Antibody is suitable for immunomicroscopy and flow cytometry or FACS analysis as well as other antibody based fluorescent assays requiring extremely low background levels, absence of F(c) mediated binding, lot-to-lot consistency, high titer and specificity. Specific conditions should be optimized by user.
Background	RAT IgG (H&L) (GOAT) Antibody was generated in goat detects specifically Rat IgG whole molecule. Anti-Rat IgG antibody is ideal for investigators involved in serum protein component research.
Purity And Specificity	Anti-RAT IgG (H&L) (GOAT) Antibody was prepared from monospecific antiserum by immunoaffinity chromatography using Rat IgG coupled to agarose beads followed by solid phase adsorption(s) to remove any unwanted reactivities. Assay by immunoelectrophoresis resulted in a single precipitin arc against anti-Goat Serum, Rat IgG and Rat Serum. No reaction was observed against Bovine, Chicken, Goat, Guinea Pig, Hamster, Horse, Human, Mouse, Rabbit and Sheep Serum Proteins.
Assay Dilutions	User Optimized
ELISA	1:10,000 - 1:40,000
Immunohistochemistry	1:500 - 1:2,000
WESTERN BLOT	1:1,000 - 1:4,000
IHC	1:500 - 1:2,000
OTHER ASSAYS	User Optimized
Expiration	Expiration date is one (1) year from date of opening.
Immunogen	Rat IgG whole molecule

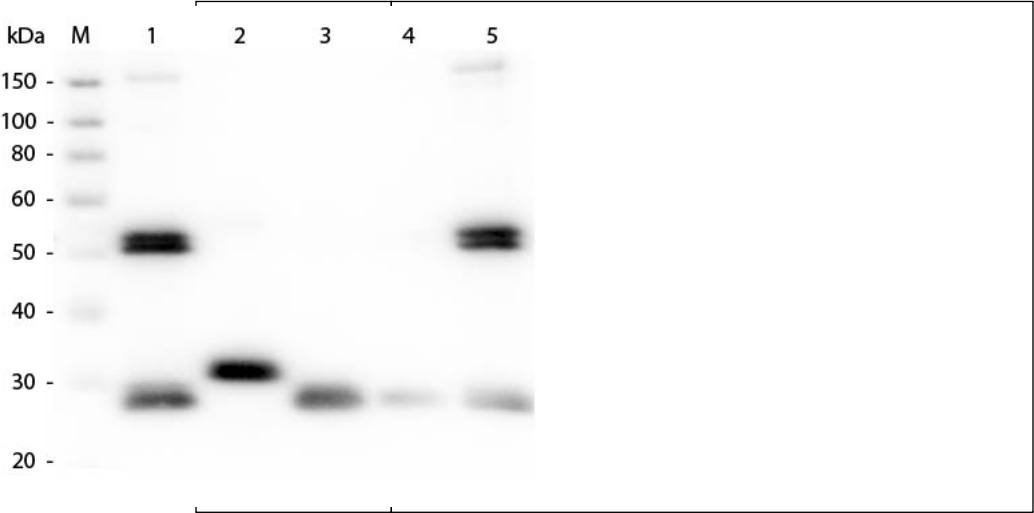
Related Products

B304	NORMAL GOAT SERUM (NGS) - B304
B501-0500	BLOTTO Immunoanalytical Grade (Non-Fat Dry Milk) - B501-0500
BSA-50	BOVINE SERUM ALBUMIN - Fraction V (Immunoglobulin and Protease Free) - BSA-50
D110-00-0050	RAT SERUM (sterile) - D110-00-0050

Related Links

1

Western Blot of Anti-Rat IgG (H&L) (GOAT) Antibody (Min X Bv Ch Gt GP Ham Hs Hu Ms Rb & Sh Serum Proteins) (p/n 612-101-120). Lane M: 3 µl Molecular Ladder. Lane 1: Rat IgG whole molecule (p/n 012-0102). Lane 2: Rat IgG F(c) Fragment (p/n 012-0103). Lane 3: Rat IgG Fab Fragment (p/n 012-0105). Lane 4: Rat IgM Whole Molecule (p/n 012-0107). Lane 5: Rat Serum (p/n D310-05). All samples were reduced. Load: 50 ng per lane. Block: MB-070 for 30 min at RT. Primary Antibody: Anti-Rat IgG (H&L) (GOAT) Antibody (Min X Bv Ch Gt GP Ham Hs Hu Ms Rb & Sh Serum Proteins) (p/n 612-101-120) 1:1,000 for 60 min at RT. Secondary Antibody: Anti-Goat IgG (DONKEY) Peroxidase Conjugated Antibody (p/n CUST10) 1:40,000 in MB-070 for 30 min at RT. Predicted/Observed Size: 25 and 55 kDa for Rat IgG and Serum, 25 kDa for F(c) and Fab, 78 and 25 kDa for IgM. Rat F(c) migrates slightly higher.



Disclaimer

This product is for research use only and is not intended for therapeutic or diagnostic applications. Please contact a technical service representative for more information. All products of animal origin manufactured by Rockland Immunochemicals are derived from starting materials of North American origin. Collection was performed in United States Department of Agriculture (USDA) inspected facilities and all materials have been inspected and certified to be free of disease and suitable for exportation. All properties listed are typical characteristics and are not specifications. All suggestions and data are offered in good faith but without guarantee as conditions and methods of use of our products are beyond our control. All claims must be made within 30 days following the date of delivery. The prospective user must determine the suitability of our materials before adopting them on a commercial scale. Suggested uses of our products are not recommendations to use our products in violation of any patent or as a license under any patent of Rockland Immunochemicals, Inc. If you require a commercial license to use this material and do not have one, then return this material, unopened to: Rockland Inc., P.O. BOX 5199, Limerick, Pennsylvania, USA.