



## Anti-RABBIT IgG (H&L) (DONKEY) Antibody Alkaline Phosphatase Conjugated (Min X Bv Ch Gt GP Ham Hs Hu Ms Rt & Sh Serum Proteins) - 611-705-127

**Code:** 611-705-127

**Size:** 1 mg

**Product Description:** Anti-RABBIT IgG (H&L) (DONKEY) Antibody Alkaline Phosphatase Conjugated (Min X Bv Ch Gt GP Ham Hs Hu Ms Rt & Sh Serum Proteins) - 611-705-127

**Concentration:** 1.0 mg/mL by UV absorbance at 280 nm

**PhysicalState:** Liquid (sterile filtered)

<b>Label</b>	Alkaline Phosphatase (Calf Intestine)
<b>Host</b>	Donkey
<b>Species Reactivity</b>	Rabbit
<b>Buffer</b>	0.05 M Tris Chloride, 0.15M Sodium Chloride, 0.001M Magnesium Chloride, 0.0001M Zinc Chloride, 50% (v/v) Glycerol; pH 8.0
<b>Stabilizer</b>	10 mg/mL Bovine Serum Albumin (BSA) - Immunoglobulin and Protease free
<b>Preservative</b>	0.01% (w/v) Sodium Azide
<b>Storage Condition</b>	Store vial at 4° C before opening. DO NOT FREEZE. This product is stable at 4° C as an undiluted liquid. Dilute only prior to immediate use. Freezing alkaline phosphatase conjugates will result in a substantial loss of enzymatic activity.
<b>Synonyms</b>	Rabbit IgG (H&L) alkaline Phosphatase conjugated Antibody, Dk-a-Rabbit IgG (H&L) alkaline Phosphatase conjugated antibody, Rabbit IgG (H&L) phosphatase alkaline conjugated Antibody in donkey, Donkey IgG phosphatase conjugated Secondary Antibody.
<b>Application Note</b>	Antibody Anti-Rabbit IgG (H&L) is suitable for immunoblotting (western or dot blot), ELISA, and immunohistochemistry assays requiring lot-to-lot consistency.
<b>Background</b>	Anti-Rabbit IgG (H&L) antibody generated in donkey detects specifically rabbit IgG (H&L). This secondary antibody anti-Rabbit is ideal for investigators who routinely perform titration assays, western-blot, immunoprecipitation and more generally immunoassays.
<b>Purity And Specificity</b>	This product was prepared from monospecific antiserum by immunoaffinity chromatography using Rabbit IgG coupled to agarose beads followed by solid phase adsorption(s) to remove any unwanted reactivities. Assay by immunoelectrophoresis resulted in a single precipitin arc against anti-Alkaline Phosphatase (calf intestine), anti-Donkey Serum, Rabbit IgG and Rabbit Serum. No reaction was observed against Bovine, Chicken, Goat, Guinea Pig, Horse, Human, Mouse, Rat and Sheep Serum Proteins.
<b>Assay Dilutions</b>	User Optimized
<b>ELISA</b>	1:10,000 - 1:20,000
<b>Immunohistochemistry</b>	1:400 - 1:2,000
<b>WESTERN BLOT</b>	1:1,000 - 1:5,000
<b>IHC</b>	1:400 - 1:2,000
<b>OTHER ASSAYS</b>	User Optimized
<b>Immunogen</b>	Anti-Rabbit IgG (H&L) was produced by repeated immunization with Rabbit IgG whole molecule in donkey

### Related Products

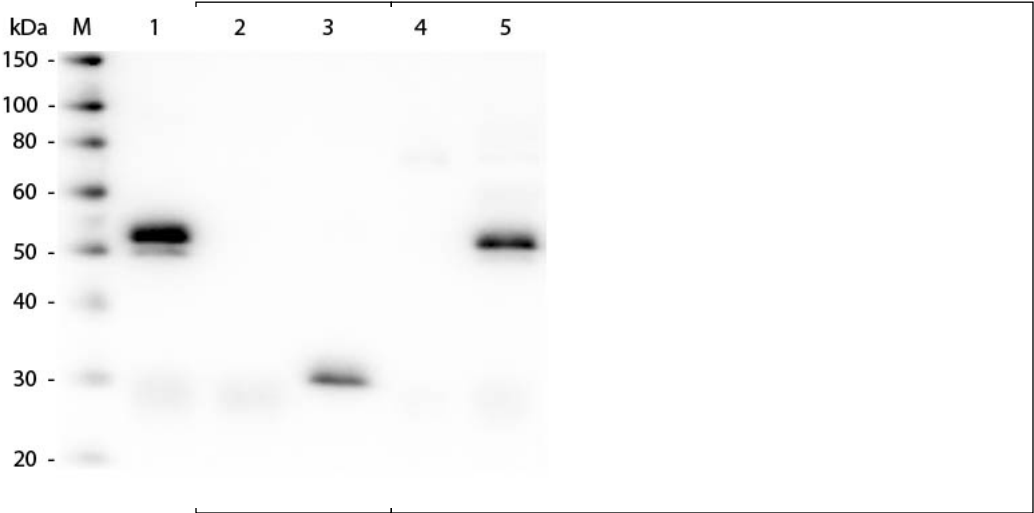
610-4302	Anti-MOUSE IgG (H&L) (RABBIT) Antibody Peroxidase Conjugated - 610-4302
611-1302	Anti-RABBIT IgG (H&L) (GOAT) Antibody Peroxidase Conjugated - 611-1302
B304	NORMAL GOAT SERUM (NGS) - B304
B552-0500	BLOTTO A PRE-MIXED - for a 1X SOLUTION of Immunoanalytical Grade 5% NON-FAT DRY MILK in TBS with TWEEN-20 - B552-0500

Related Links

Images

1

Western Blot of Anti-Rabbit IgG (H&L) (DONKEY) Antibody (Min X Bv Ch Gt GP Ham Hs Hu Ms Rt & Sh Serum Proteins) (p/n 611-701-127). Lane M: 3 µl Molecular Ladder. Lane 1: Rabbit IgG whole molecule (p/n 011-0102). Lane 2: Rabbit IgG F(ab) Fragment (p/n 011-0105). Lane 3: Rabbit IgG F(c) Fragment (p/n 010-0103). Lane 4: Rabbit IgM Whole Molecule (p/n 011-0107). Lane 5: Normal Rabbit Serum (p/n B309). All samples were reduced. Load: 50 ng of IgG, F(ab), F(c) and Serum, 25 ng of IgM. Block: MB-070 for 30 min at RT. Primary Antibody: Anti-Rabbit IgG (H&L) (DONKEY) Antibody (Min X Bv Ch Gt GP Ham Hs Hu Ms Rt & Sh Serum Proteins) (p/n 611-701-127) 1:7,500 for 60 min at RT. Secondary antibody: Anti-Donkey IgG (GOAT) Peroxidase Conjugated Antibody (p/n 616-1302) 1:40,000 in MB-070 for 30 min at RT. Predicted/Obsevered Size: 25 and 50 kDa for Rabbit IgG and Serum, 25 kDa for F(c) and F(ab), 70 and 23 kDa for IgM. Rabbit F(c) migrates slightly higher.



Disclaimer

This product is for research use only and is not intended for therapeutic or diagnostic applications. Please contact a technical service representative for more information. All products of animal origin manufactured by Rockland Immunochemicals are derived from starting materials of North American origin. Collection was performed in United States Department of Agriculture (USDA) inspected facilities and all materials have been inspected and certified to be free of disease and suitable for exportation. All properties listed are typical characteristics and are not specifications. All suggestions and data are offered in good faith but without guarantee as conditions and methods of use of our products are beyond our control. All claims must be made within 30 days following the date of delivery. The prospective user must determine the suitability of our materials before adopting them on a commercial scale. Suggested uses of our products are not recommendations to use our products in violation of any patent or as a license under any patent of Rockland Immunochemicals, Inc. If you require a commercial license to use this material and do not have one, then return this material, unopened to: Rockland Inc., P.O. BOX 5199, Limerick, Pennsylvania, USA.