

Anti-RABBIT IgG (H&L) (SHEEP) Antibody - 611-6102

Code: 611-6102

Size: 2 mg

Product Description: Anti-RABBIT IgG (H&L) (SHEEP) Antibody - 611-6102

Concentration: 2.1 mg/mL by UV absorbance at 280 nm

PhysicalState: Liquid (sterile filtered)

Label	Unconjugated
Host	Sheep
Species Reactivity	Rabbit
Buffer	0.02 M Potassium Phosphate, 0.15 M Sodium Chloride, pH 7.2
Stabilizer	None
Preservative	0.01% (w/v) Sodium Azide
Storage Condition	Store vial at 4° C prior to opening. This product is stable for several weeks at 4° C as an undiluted liquid. Dilute only prior to immediate use. For extended storage aliquot contents and freeze at -20° C or below. Avoid cycles of freezing and thawing.
Synonyms	Sheep Anti-Rabbit, Rabbit Secondary Ab, Rabbit Antibody in Sheep
Application Note	Anti-RABBIT IgG (H&L) (SHEEP) Antibody is suitable for immunoblotting (western or dot blot), ELISA, immunoperoxidase electron microscopy and immunohistochemistry as well as other peroxidase-antibody based enzymatic assays requiring lot-to-lot consistency.
Background	RABBIT IgG (H&L) (SHEEP) Antibody generated in sheep detects specifically rabbit IgG whole molecule. Anti-rabbit IgG antibody is ideal for investigators involved in serum protein component research.
Purity And Specificity	Anti-RABBIT IgG (H&L) (SHEEP) Antibody was prepared from monospecific antiserum by immunoaffinity chromatography using Rabbit IgG coupled to agarose beads followed by solid phase adsorption(s) to remove any unwanted reactivities. Assay by immunoelectrophoresis resulted in a single precipitin arc against anti-Sheep Serum, Rabbit IgG and Rabbit Serum.
Assay Dilutions	User Optimized
ELISA	1:40,000 - 1:200,000
Immunohistochemistry	1:2,000 - 1:10,000
WESTERN BLOT	1:4,000 - 1:20,000
IHC	1:2,000 - 1:10,000
OTHER ASSAYS	User Optimized
Expiration	Expiration date is one (1) year from date of opening.
Immunogen	Rabbit IgG whole molecule

Related Products

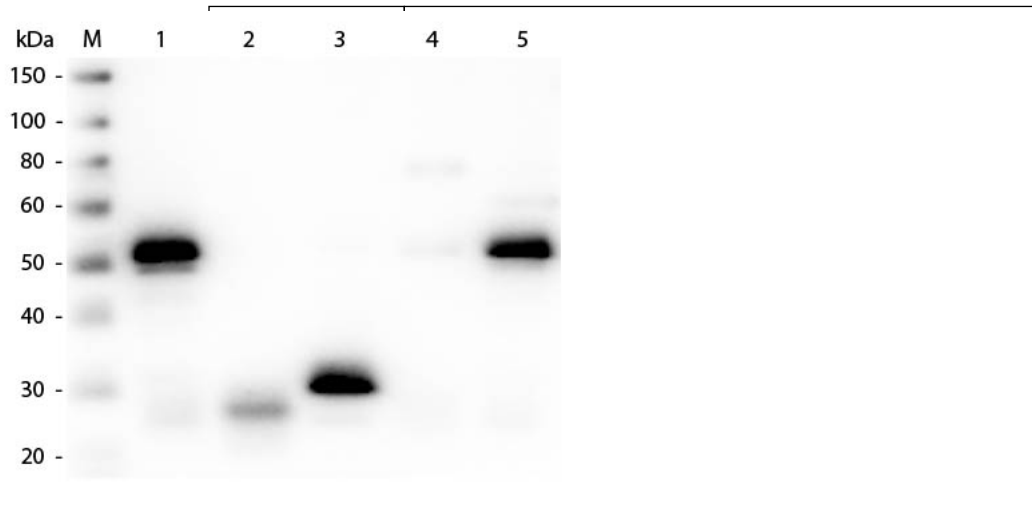
B501-0500	BLOTTO Immunoanalytical Grade (Non-Fat Dry Milk) - B501-0500
BSA-50	BOVINE SERUM ALBUMIN - Fraction V (Immunoglobulin and Protease Free) - BSA-50
MB-070	Blocking Buffer for Fluorescent Western Blotting - MB-070
KAS-001	Loading Control Antibody Sampler KitKAS-001

Related Links
Images

1

Western Blot of Anti-Rabbit IgG (H&L) (SHEEP) Antibody (Min X Hu, Gt, Ms Serum Proteins) (p/n 611-6102). Lane M: 3 µl

Molecular Ladder. Lane 1: Rabbit IgG whole molecule (p/n 011-0102). Lane 2: Rabbit IgG F(ab) Fragment (p/n 011-0105). Lane 3: Rabbit IgG F(c) Fragment (p/n 010-0103). Lane 4: Rabbit IgM Whole Molecule (p/n 011-0107). Lane 5: Normal Rabbit Serum (p/n B309). All samples were reduced. Load: 50 ng per lane. Block: MB-070 for 30 min at RT. Primary Antibody: Anti-Rabbit IgG (H&L) (SHEEP) Antibody (Min X Hu, Gt, Ms Serum Proteins) (p/n 611-6102) 1:3,000 for 60 min at RT. Secondary antibody: Anti-Sheep IgG (DONKEY) Peroxidase Conjugated Antibody (p/n 613-703-168) 1:40,000 in MB-070 for 30 min at RT. Predicted/Obsevered Size: 25 and 50 kDa for Rabbit IgG and Serum, 25 kDa for F(c) and F(ab), 70 and 23 kDa for IgM. Rabbit F(c) migrates slightly higher.



Disclaimer

This product is for research use only and is not intended for therapeutic or diagnostic applications. Please contact a technical service representative for more information. All products of animal origin manufactured by Rockland Immunochemicals are derived from starting materials of North American origin. Collection was performed in United States Department of Agriculture (USDA) inspected facilities and all materials have been inspected and certified to be free of disease and suitable for exportation. All properties listed are typical characteristics and are not specifications. All suggestions and data are offered in good faith but without guarantee as conditions and methods of use of our products are beyond our control. All claims must be made within 30 days following the date of delivery. The prospective user must determine the suitability of our materials before adopting them on a commercial scale. Suggested uses of our products are not recommendations to use our products in violation of any patent or as a license under any patent of Rockland Immunochemicals, Inc. If you require a commercial license to use this material and do not have one, then return this material, unopened to: Rockland Inc., P.O. BOX 5199, Limerick, Pennsylvania, USA.