

## Anti-MOUSE IgG (H&L) (RABBIT) Antibody Alkaline Phosphatase Conjugated - 610-4502

**Code:** 610-4502

**Size:** 1 mg

**Product Description:** Anti-MOUSE IgG (H&L) (RABBIT) Antibody Alkaline Phosphatase Conjugated - 610-4502

**Concentration:** 1.0 mg/mL by UV absorbance at 280 nm

**PhysicalState:** Liquid (sterile filtered)

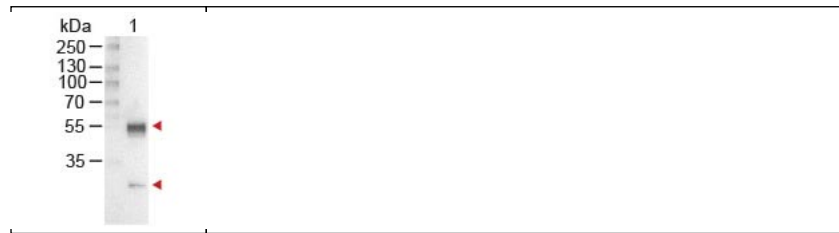
<b>Label</b>	Alkaline Phosphatase (Calf Intestine)
<b>Host</b>	Rabbit
<b>Buffer</b>	0.05 M Tris Chloride, 0.15M Sodium Chloride, 0.001M Magnesium Chloride, 0.0001M Zinc Chloride, 50% (v/v) Glycerol; pH 8.0
<b>Stabilizer</b>	10 mg/mL Bovine Serum Albumin (BSA) - Immunoglobulin and Protease free
<b>Preservative</b>	0.01% (w/v) Sodium Azide
<b>Storage Condition</b>	Store secondary antibody at 4° C before opening. DO NOT FREEZE. Mouse conjugated antibody is stable at 4° C as an undiluted liquid. Dilute only prior to immediate use. Freezing alkaline phosphatase conjugates will result in a substantial loss of enzymatic activity.
<b>Synonyms</b>	Conjugated Secondary Antibody, Alk Phos anti mouse IgG, ALP antibody conjugate
<b>Application Note</b>	Secondary antibody reagents are available in a variety of formats and conjugate types. When choosing a secondary antibody product, consideration must be given to species and immunoglobulin specificity, conjugate type, fragment and chain specificity, level of cross-reactivity, and host-species source and fragment composition.
<b>Background</b>	Conjugated Secondary Antibodies are ideal for western blotting, Immunohistochemistry and ELISA as well as other antibody detection methods.
<b>Purity And Specificity</b>	Secondary antibody was prepared from monospecific antiserum by immunoaffinity chromatography using Mouse IgG coupled to agarose beads followed by solid phase adsorption(s) to remove any unwanted reactivities. Assay by immunoelectrophoresis resulted in a single precipitin arc against anti-Alkaline Phosphatase (calf intestine), anti-Rabbit Serum, Mouse IgG and Mouse Serum.
<b>Assay Dilutions</b>	User Optimized
<b>ELISA</b>	1:2,000 - 1:10,000
<b>Immunohistochemistry</b>	1:200 - 1:1,000
<b>WESTERN BLOT</b>	1:500 - 1:2,500
<b>IHC</b>	1:200 - 1:1,000
<b>OTHER ASSAYS</b>	User Optimized
<b>Expiration</b>	Expiration date is one (1) year from date of opening.
<b>Immunogen</b>	Mouse IgG whole molecule
<b>Related Products</b>	

610-4302	Anti-MOUSE IgG (H&L) (RABBIT) Antibody Peroxidase Conjugated - 610-4302
611-1302	Anti-RABBIT IgG (H&L) (GOAT) Antibody Peroxidase Conjugated - 611-1302
B304	NORMAL GOAT SERUM (NGS) - B304
BSA-50	BOVINE SERUM ALBUMIN - Fraction V (Immunoglobulin and Protease Free) - BSA-50

### Related Links

### Images

Phosphatase ConjugatedLane 1: Mouse IgG Load: 100 ng per  
laneSecondary antibody: MOUSE IgG (H&L) Antibody Alkaline  
Phosphatase Conjugated at 1:1,000 for 60 min at RTBlock: MB-  
070 for 30 min at RTPredicted/Observed size: 55 and 28 kDa, 55  
and 28 kDa



## Disclaimer

This product is for research use only and is not intended for therapeutic or diagnostic applications. Please contact a technical service representative for more information. All products of animal origin manufactured by Rockland Immunochemicals are derived from starting materials of North American origin. Collection was performed in United States Department of Agriculture (USDA) inspected facilities and all materials have been inspected and certified to be free of disease and suitable for exportation. All properties listed are typical characteristics and are not specifications. All suggestions and data are offered in good faith but without guarantee as conditions and methods of use of our products are beyond our control. All claims must be made within 30 days following the date of delivery. The prospective user must determine the suitability of our materials before adopting them on a commercial scale. Suggested uses of our products are not recommendations to use our products in violation of any patent or as a license under any patent of Rockland Immunochemicals, Inc. If you require a commercial license to use this material and do not have one, then return this material, unopened to: Rockland Inc., P.O. BOX 5199, Limerick, Pennsylvania, USA.