

Anti-CHICKEN IgG (H&L) (RABBIT) Antibody Alkaline Phosphatase Conjugated - 603-4502

Code: 603-4502

Size: 1 mg

Product Description: Anti-CHICKEN IgG (H&L) (RABBIT) Antibody Alkaline Phosphatase Conjugated - 603-4502

Concentration: 1.0 mg/mL by UV absorbance at 280 nm

PhysicalState: Liquid (sterile filtered)

Label	Alkaline Phosphatase (Calf Intestine)
Host	Rabbit
Buffer	0.05 M Tris Chloride, 0.15M Sodium Chloride, 0.001M Magnesium Chloride, 0.0001M Zinc Chloride, 50% (v/v) Glycerol; pH 8.0
Stabilizer	10 mg/mL Bovine Serum Albumin (BSA) - Immunoglobulin and Protease free
Preservative	0.1% (w/v) Sodium Azide
Storage Condition	Store Secondary Antibody at 4° C before opening. DO NOT FREEZE. This antibody is stable at 4° C as an undiluted liquid. Dilute only prior to immediate use. Freezing alkaline phosphatase conjugates will result in a substantial loss of enzymatic activity.
Synonyms	anti-chicken Igy, ALP, Alk Phos
Application Note	Secondary antibodies are ideal for western blotting, Immunohistochemistry, ELISA, Fluorescence Microscopy, Flow Cytometry as well as other antibody detection methods
Background	Secondary Antibodies are available in a variety of formats and conjugate types. When choosing a secondary antibody, consideration must be given to species and immunoglobulin specificity, conjugate type, fragment and chain specificity, level of cross-reactivity, and host-species source and fragment composition.
Purity And Specificity	Anti-Chicken IgY / IgG Secondary Antibody was prepared from monospecific antiserum by immunoaffinity chromatography using Chicken IgY / IgG coupled to agarose beads. Assay by immunoelectrophoresis resulted in a single precipitin arc against anti-Rabbit Serum and Chicken IgY / IgG. Some light chain cross reactivity may be observed against chicken immunoglobulins.
Assay Dilutions	User Optimized
ELISA	1:2,000 - 1:10,000
Immunohistochemistry	1:200 - 1:1,000
WESTERN BLOT	1:500 - 1:2,500
IHC	1:200 - 1:1,000
OTHER ASSAYS	User Optimized
Immunogen	Chicken IgY / IgG whole molecule
Related Products	

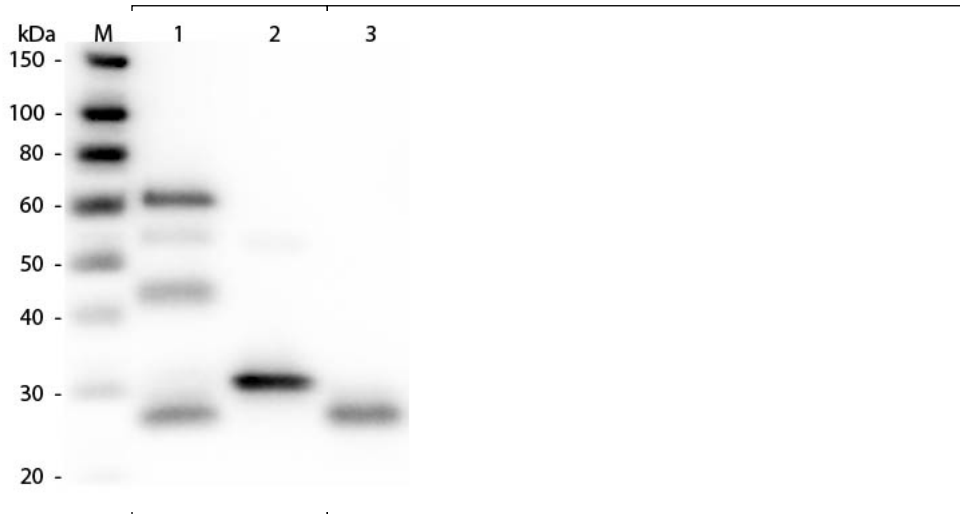
610-4302	Anti-MOUSE IgG (H&L) (RABBIT) Antibody Peroxidase Conjugated - 610-4302
611-1302	Anti-RABBIT IgG (H&L) (GOAT) Antibody Peroxidase Conjugated - 611-1302
B304	NORMAL GOAT SERUM (NGS) - B304
BSA-50	BOVINE SERUM ALBUMIN - Fraction V (Immunoglobulin and Protease Free) - BSA-50

Related Links

Images

1	Western Blot of Anti-Chicken IgG (H&L) (RABBIT) Antibody (p/n 603-4102). Lane M: 3 µl Molecular Ladder. Lane 1: Chicken IgG whole molecule (p/n 003-0102). Lane 2: Chicken IgG F(c) Fragment (p/n 003-0103). Lane 3: Chicken IgG Fab Fragment (p/n
---	--

003-0105). All samples were reduced. Load: 50 ng per lane. Block: MB-070 for 30 min at RT. Primary Antibody: Anti-Chicken IgG (H&L) (RABBIT) Antibody (p/n 603-4102) 1:3,000 for 60 min at RT. Secondary antibody: Anti-Rabbit IgG (GOAT) Peroxidase Conjugated Antibody (p/n 611-103-122) 1:40,000 in MB-070 for 30 min at RT. Predicted/Obsevered Size: 25 and 72 kDa for Chicken IgG, 25 kDa for F(c) and Fab. Chicken F(c) migrates slightly higher.



Disclaimer

This product is for research use only and is not intended for therapeutic or diagnostic applications. Please contact a technical service representative for more information. All products of animal origin manufactured by Rockland Immunochemicals are derived from starting materials of North American origin. Collection was performed in United States Department of Agriculture (USDA) inspected facilities and all materials have been inspected and certified to be free of disease and suitable for exportation. All properties listed are typical characteristics and are not specifications. All suggestions and data are offered in good faith but without guarantee as conditions and methods of use of our products are beyond our control. All claims must be made within 30 days following the date of delivery. The prospective user must determine the suitability of our materials before adopting them on a commercial scale. Suggested uses of our products are not recommendations to use our products in violation of any patent or as a license under any patent of Rockland Immunochemicals, Inc. If you require a commercial license to use this material and do not have one, then return this material, unopened to: Rockland Inc., P.O. BOX 5199, Limerick, Pennsylvania, USA.