

Anti-alpha Synuclein (Mouse) Antibody - 500-301-E56

Code: 500-301-E56

Size: 100 µL

Product Description: Anti-alpha Synuclein (Mouse) Antibody - 500-301-E56

Concentration: Titrated value sufficient to run approximately 10 mini blots.

PhysicalState: Liquid

Label	Unconjugated
Host	Mouse
Gene Name	SNCA
Species Reactivity	human, mouse, rat
Preservative	0.01% (w/v) Sodium Azide
Storage Condition	Store vial at -20° C prior to opening. This product is stable at 4° C as an undiluted liquid. For extended storage, aliquot contents and freeze at -20° C or below. Avoid cycles of freezing and thawing. Dilute only prior to immediate use.
Synonyms	Non-A beta component of AD amyloid, Non-A4 component of amyloid precursor, NACP
Application Note	Alpha Synuclein antibody is suitable for use in ELISA, Western Blotting and IF. Specific conditions should be optimized by the end user. Expect a band of approximately 15 kDa in size corresponding to the alpha synuclein proteins in the appropriate cell lysate or extract.
Background	Alpha Synuclein Antibody detects Alpha Synuclein protein. Alpha-synuclein is a presynaptic neuronal protein that is thought to be involved in the formation of SNARE complexes. Most significantly, aggregated alpha-synuclein is one of the major components found in the Lewy bodies that occur in Parkinson's disease (PD) and other neurodegenerative disorders. Early onset Parkinson's disease may be caused by a duplication or triplication of one of the alpha synuclein genes. Alpha-synuclein is also found in the Lewy bodies of patients with diffuse Lewy body disease and inclusions in glial cells in the brains of patients with multiple system atrophy (MSA) and amyotrophic lateral sclerosis (ALS). Anti-Alpha-synuclein antibody is ideal for investigators involved in Cell Signaling, Neuroscience, Signal Transduction research.
Purity And Specificity	Anti-Alpha Synuclein Antibody is directed against human Alpha Synuclein protein. The antibody was produced from clarified mouse ascetic fluid. Reactivity is expected against alpha synuclein from most mammalian species based on 100% sequence homology. Cross reactivity with Alpha Synuclein from other sources has not been determined.
ELISA	1:10,000
WESTERN BLOT	1:1000
IF/MICROSCOPY	1:500
Expiration	Expiration date is one (1) year from date of opening.
Immunogen	Anti-Alpha Synuclein Antibody was produced by repeated immunizations with full length human alpha synuclein.
General Reference	Okochi M, Walter J, Koyama A, Nakajo S, Baba M, Iwatsubo T, Meijer L, Kahle PJ and Haass C (2000). Constitutive phosphorylation of the Parkinson's disease associated alpha-synuclein. J Biol Chem Jan 7;275(1): 390-7. Chartier-Harlin, MC. et al. (2004). Alpha-synuclein locus duplication as a cause of familial Parkinson's disease. Lancet 364: 1167-1169. Singleton, AB et al. (2003). Alpha-synuclein locus triplication causes Parkinson's disease. Science 302: 841.

Related Products

200-401-431	Anti-UBIQUITIN (RABBIT) Antibody - 200-401-431
600-401-691	Anti-Human PARK-7 (RABBIT) Antibody - 600-401-691
610-106-121	Anti-MOUSE IgG (H&L) (GOAT) Antibody Biotin Conjugated (Min X Bv Ch Gt Gp Ham Hs Hu Rb Rt & Sh Serum Proteins) - 610-106-121
MB-064-1000	ELISA Microwell Blocking Buffer with Stabilizer (Azide and Mercury Free) - MB-064-1000

Related Links

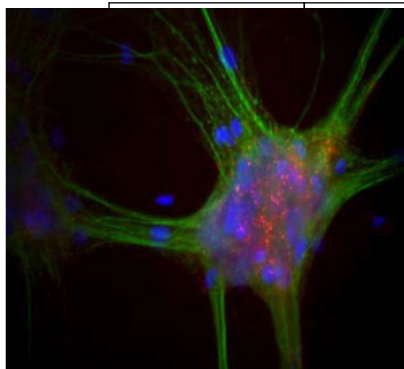
UniProtKB - P37840 <http://www.uniprot.org/uniprot/P37840>

GeneID - 6622 <http://www.ncbi.nlm.nih.gov/sites/entrez?db=gene&term=6622>

UniProtKB - P37840.1 <http://www.uniprot.org/uniprot/P37840.1>

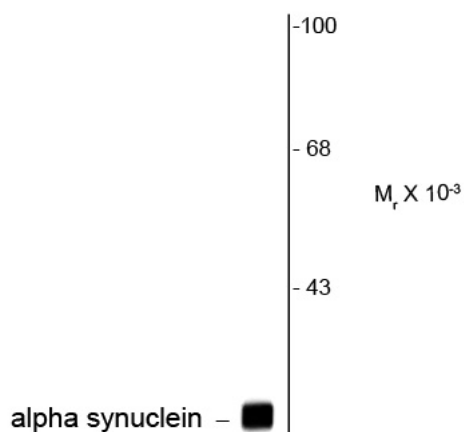
Images

- 1 Immunofluorescence Microscopy of Alpha-synuclein (Mouse) Antibody. Tissue: Mixed neuron-glia cultures. Fixation: 0.5% PFA. Antigen retrieval: not required. Primary antibody: Alpha-synuclein antibody at 10 µg/mL for 1 h at RT. Secondary antibody: Fluorescein mouse secondary antibody at 1:10,000 for 45 min at RT. Localization: alpha-synuclein antibody stains vesicular structures, the perikarya and processes of the neurons in this image. Staining: alpha-synuclein (red) and chicken MAP2 (green).



- 2 Western Blot of Anti-alpha Synuclein (Mouse) Antibody. Lane 1: rat brain lysate. Lane 2: none. Load: 10 µg per lane. Primary antibody: alpha synuclein antibody at 1:400 for overnight at 4°C. Secondary antibody: IRDye800™ mouse secondary antibody at 1:10,000 for 45 min at RT. Block: 5% BLOTTO overnight at 4°C. Predicted/Observed size: ~ 15kDa/~15kDa for alpha synuclein protein. Other band(s): none.

Anti-alpha Synuclein



Western blot of rat brain lysate showing specific immunolabeling of the ~15k alpha synuclein protein.

Disclaimer

This product is for research use only and is not intended for therapeutic or diagnostic applications. Please contact a technical service representative for more information. All products of animal origin manufactured by Rockland Immunochemicals are derived from starting materials of North American origin. Collection was performed in United States Department of Agriculture (USDA) inspected facilities and all materials have been inspected and certified to be free of disease and suitable for exportation. All properties listed are typical characteristics and are not specifications. All suggestions and data are offered in good faith but without guarantee as conditions and methods of use of our products are beyond our control. All claims must be made within 30 days following the date of delivery. The prospective user must determine the suitability of our materials before adopting them on a commercial scale. Suggested uses of our products are not recommendations to use our products in violation of any patent or as a license under any patent of Rockland Immunochemicals, Inc. If you require a commercial license to use this material and do not have one, then return this material, unopened to: Rockland Inc., P.O. BOX 5199, Limerick, Pennsylvania, USA.