



# Anti-ADENOSINE DEAMINASE (Calf Spleen) (RABBIT) Antibody Biotin Conjugated- 200-406-140-0100

**Code:** 200-406-140-0100

**Size:** 100 µg

**Product Description:** Anti-ADENOSINE DEAMINASE (Calf Spleen) (RABBIT) Antibody Biotin Conjugated- 200-406-140-0100

**Concentration:** 1.0 mg/mL by UV absorbance at 280 nm

**PhysicalState:** Lyophilized

<b>Label</b>	Biotin
<b>Host</b>	Rabbit
<b>Gene Name</b>	ADA
<b>Species Reactivity</b>	Bovine Calf spleen
<b>Buffer</b>	0.02 M Potassium Phosphate, 0.15 M Sodium Chloride, pH 7.2
<b>Stabilizer</b>	10 mg/mL Bovine Serum Albumin (BSA) - Immunoglobulin and Protease free
<b>Preservative</b>	0.01% (w/v) Sodium Azide
<b>Storage Condition</b>	Store vial at 4° C prior to restoration. For extended storage aliquot contents and freeze at -20° C or below. Avoid cycles of freezing and thawing. Centrifuge product if not completely clear after standing at room temperature. This product is stable for several weeks at 4° C as an undiluted liquid. Dilute only prior to immediate use.
<b>Synonyms</b>	Adenosine deaminase EC=3.5.4.4 Adenosine aminohydrolase
<b>Application Note</b>	This product has been assayed against 1.0 ug of Adenosine Deaminase in a standard capture ELISA using Peroxidase Conjugated Streptavidin #S000-03 and ABTS (2,2'-azino-bis-[3-ethylbenthiazoline-6-sulfonic acid]) code # ABTS-100 as a substrate for 30 minutes at room temperature. A working dilution of 1:15,000 to 1:64,000 of the reconstitution concentration is suggested for this product.
<b>Background</b>	Adenosine Deaminase catalyzes the deamination of adenosine to inosine, thus destabilizing double-stranded RNA. Anti-Adenosine Deaminase is a member of the adenosine and AMP deaminases family. This antibody is a factor in purine metabolism and adenosine homeostasis, as well as positively regulating T-cell coactivation through the binding of DPP4. The antibody interacts with DPP4 in the extracellular domain, thus regulating lymphocyte-epithelial cell adhesion. It moderates extracellular adenosine signaling. Enzyme deficiency in Adenosine Deaminase has been associated with severe combined immunodeficiency disease, whereas an overabundance may result in congenital hemolytic anemia. Anti-Adenosine Deaminase is ideal for investigators involved in Enzyme, DNA and RNA research.
<b>Purity And Specificity</b>	This product is an IgG fraction antibody purified from monospecific antiserum by a multi-step process which includes delipidation, salt fractionation and ion exchange chromatography followed by extensive dialysis against the buffer stated above. Assay by immunoelectrophoresis resulted in a single precipitin arc against anti-Biotin, anti-Rabbit Serum as well as purified and partially purified Adenosine Deaminase [Calf Spleen]. Cross reactivity against Adenosine Deaminase from other sources may occur but has not been specifically determined.
<b>Assay Dilutions</b>	User Optimized
<b>ELISA</b>	1:5,000 - 1:20,000
<b>WESTERN BLOT</b>	1:500 - 1:5,000
<b>OTHER ASSAYS</b>	User Optimized
<b>Expiration</b>	Expiration date is one (1) year from date of opening.
<b>Immunogen</b>	Adenosine Deaminase [Calf Spleen]
<b>Related Products</b>	

200-301-268 Anti-AKT pS473 (MOUSE) Monoclonal Antibody - 200-301-268

610-4302 Anti-MOUSE IgG (H&L) (RABBIT) Antibody Peroxidase Conjugated - 610-4302

611-1302 Anti-RABBIT IgG (H&L) (GOAT) Antibody Peroxidase Conjugated - 611-1302

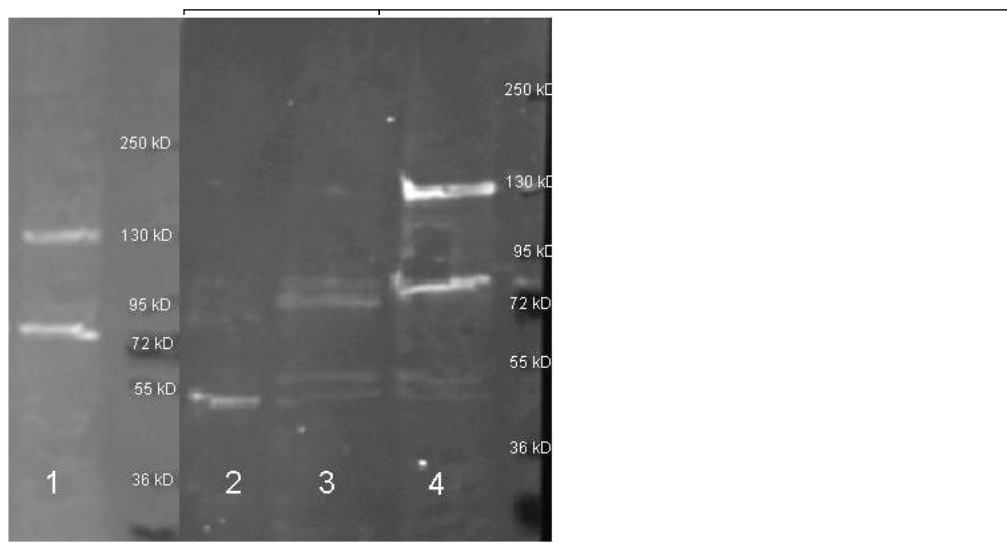
## Related Links

UniProtKB	<a href="http://www.uniprot.org/uniprot/P56658">http://www.uniprot.org/uniprot/P56658</a>
NCBI - P56658.3	<a href="http://www.ncbi.nlm.nih.gov/protein/P56658.3">http://www.ncbi.nlm.nih.gov/protein/P56658.3</a>
UniProt - P56658	<a href="http://www.uniprot.org/uniprot/P56658">http://www.uniprot.org/uniprot/P56658</a>
Gene ID - 280712	<a href="http://www.ncbi.nlm.nih.gov/gene/280712">http://www.ncbi.nlm.nih.gov/gene/280712</a>

## Images

1

Rockland biotin conjugated anti adenosine deaminase (200-406-140) was used to detect adenosine deaminase in mouse pancreas lysate (Left, Lane 1, 30 ul) under reducing conditions. The antibody was also used to detect purified Adenosine Deaminase (right, Lane 2), and endogenous Adenosine Deaminase in whole cell lysate from Jurkat and Raji cells (1:1 mixture, lane 3,) as well as Mouse Pancreas and Liver (1:1 mixture, lane 4). Lysates were run on 4-20% gel 140V under reducing conditions, transferred for 30 minutes at 100 V and blocked with 3% Fish Gel (left) or 3% BSA. Blot was incubated with 200-406-140 lot 5628 (1:5K in TBS, ON 4°C), washed 3X in TBS and incubated for 30 minutes with Dylight 488 conjugated Streptavidin (S000-41 lot 20833 1:5K in MB-070). Blot was imaged with the Biorad VersaDoc imaging system.



## Disclaimer

This product is for research use only and is not intended for therapeutic or diagnostic applications. Please contact a technical service representative for more information. All products of animal origin manufactured by Rockland Immunochemicals are derived from starting materials of North American origin. Collection was performed in United States Department of Agriculture (USDA) inspected facilities and all materials have been inspected and certified to be free of disease and suitable for exportation. All properties listed are typical characteristics and are not specifications. All suggestions and data are offered in good faith but without guarantee as conditions and methods of use of our products are beyond our control. All claims must be made within 30 days following the date of delivery. The prospective user must determine the suitability of our materials before adopting them on a commercial scale. Suggested uses of our products are not recommendations to use our products in violation of any patent or as a license under any patent of Rockland Immunochemicals, Inc. If you require a commercial license to use this material and do not have one, then return this material, unopened to: Rockland Inc., P.O. BOX 5199, Limerick, Pennsylvania, USA.