

Anti-Cyclin L1/L2 (isoform 2) [RABBIT] Antibody - 200-401-890

Code: 200-401-890

Size: 500 µg

Product Description: Anti-Cyclin L1/L2 (isoform 2) [RABBIT] Antibody - 200-401-890

Concentration: 5.0 mg/mL by UV absorbance at 280 nm

PhysicalState: Lyophilized

Label	Unconjugated
Host	Rabbit
Gene Name	CCNL1
Species Reactivity	mouse, human, rat
Buffer	0.02 M Potassium Phosphate, 0.15 M Sodium Chloride, pH 7.2
Stabilizer	None
Preservative	0.01% (w/v) Sodium Azide
Storage Condition	Store vial at 4° C prior to restoration. For extended storage aliquot contents and freeze at -20° C or below. Avoid cycles of freezing and thawing. Centrifuge product if not completely clear after standing at room temperature. This product is stable for several weeks at 4° C as an undiluted liquid. Dilute only prior to immediate use.
Synonyms	Cyclin L beta
Application Note	This Protein A purified antibody has been tested for use in ELISA, western blot, immunohisto-chemistry, immunoprecipitation and immunofluorescence. Specific conditions for reactivity should be optimized by the end user. Expect a band ~ 25 kDa to 35 kDa in size corresponding to Cyclin L1b and Cyclin L2b by western blotting in the appropriate cell lysate or extract.
Background	Cyclin L (also referred to as CCNL) is encoded by two highly related genes Cyclin L1 and Cyclin L2 (CCNL1 and CCNL2, respectively). Cyclin L has been shown to associate with the PITSLRE kinase and is involved in pre-mRNA processing. Both Cyclin L gene products can be alternatively spliced to produce two isoforms (known as 1 and 2 or alpha and beta). Cyclin L2 is ubiquitous, expressed at much higher levels than Cyclin L1, and thus is likely the major partner for the CDK11p110 protein kinase.
Purity And Specificity	The product was purified from monospecific antiserum by Protein A chromatography. This antibody will react with all forms of Cyclin L b (cyclin L1b and cyclin L2b). Cross reactivity with Cyclin L beta proteins from other sources is unknown.
Assay Dilutions	User Optimized
ELISA	1:5,000 - 1:25,000
Immunohistochemistry	2 mg/ml - 20 µg/ml
WESTERN BLOT	1:1,000 - 1:5,000
IHC	2 mg/ml - 20 µg/ml
OTHER ASSAYS	User Optimized
Expiration	Expiration date is one (1) year from date of opening.
Immunogen	This Protein A purified antibody was prepared from whole rabbit serum produced by repeated immunizations with a synthetic construct consisting of full length Human Cyclin L1b protein.
General Reference	<p>Sticht,C., Hofele,C., Flechtenmacher,C., Bosch,F.X., Freier,K., Lichter,P. and Joos,S. (2005) Amplification of Cyclin L1 is associated with lymph node metastases in head and neck squamous cell carcinoma (HNSCC). Br. J. Cancer 92 (4), 770-774.</p> <p>Dickinson,L.A., Edgar,A.J., Ehley,J. and Gottesfeld,J.M. (2002) Cyclin L is an RS domain protein involved in pre-mRNA splicing. J. Biol. Chem. 277 (28), 25465-25473.</p> <p>Yang,L., Li,N., Wang,C., Yu,Y., Yuan,L., Zhang,M. and Cao,X. (2004) Cyclin L2, a novel RNA polymerase II-associated cyclin, is involved in pre-mRNA splicing and induces apoptosis of human hepatocellular carcinoma cells. J. Biol. Chem. 279 (12), 11639-11648.</p>

Related Products

200-401-881	Anti-Cyclin L1 (isoform 1) [RABBIT] Antibody - 200-401-881
209-401-B99	Anti-VEGF (RABBIT) Antibody - 209-401-B99
611-1302	Anti-RABBIT IgG (H&L) (GOAT) Antibody Peroxidase Conjugated - 611-1302
611-143-002	Anti-RABBIT IgG (H&L) (GOAT) Antibody DyLight™ 649 Conjugated - 611-143-002

Related Links

UniProtKB	http://www.uniprot.org/uniprot/Q9UK58
NCBI	http://www.ncbi.nlm.nih.gov/protein/NP_064703.1
NCBI - NP_064703.1	http://www.ncbi.nlm.nih.gov/protein/NP_064703.1
UniProt - Q9UK58	http://www.uniprot.org/uniprot/Q9UK58
Gene ID - 57018	http://www.ncbi.nlm.nih.gov/gene/57018

Images

- 1

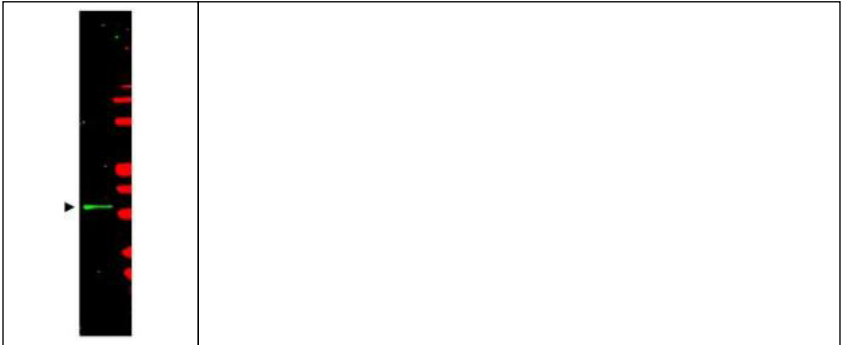
Rockland's Affinity Purified anti- Cyclin L1/L2 (isoform 2) antibody was used at a 10 µg/ml to detect cyclin L in a variety of tissues including breast, kidney, liver, lung, skeletal muscle, pancreas, prostate and spleen. In some tissues elevated background staining was noted. In these instances further optimization of dilution is suggested. This image shows Cyclin L staining of human skeletal muscle. Tissue was formalin-fixed and paraffin embedded.

Personal Communication, Tina Roush, LifeSpanBiosciences, Seattle, WA.



- 2

Western blot using Rockland's Protein A Purified anti-Cyclin L1/L2β antibody shows detection of a band ~35 kDa corresponding to Cyclin L β(arrowhead) present in mouse brain whole cell lysate (800 nm channel - green). Marker proteins appear red (700 nm channel) and were used for molecular weight comparisons. Approximately 35 µg of lysate was separated by 4-20% SDS-PAGE followed by transfer to nitrocellulose. After blocking the membrane was probed with the primary antibody diluted to 1:2,500 for 2h at room temperature followed by washes and reaction with a 1:10,000 dilution of IRDye™800 conjugated Gt-a-Rabbit IgG [H&L] MX (611-132-122) for 45 min at room temperature. IRDye™800 fluorescence image was captured using the Odyssey® Infrared Imaging System developed by LI-COR. IRDye is a trademark of LI-COR, Inc. Other detection systems will yield similar results.



Disclaimer

This product is for research use only and is not intended for therapeutic or diagnostic applications. Please contact a technical service representative for more information. All products of animal origin manufactured by Rockland Immunochemicals are derived from starting materials of North American origin. Collection was performed in United States Department of Agriculture (USDA) inspected facilities and all materials have been inspected and certified to be free of disease and suitable for exportation. All properties listed are typical characteristics and are not specifications. All suggestions and data are offered in good faith but without guarantee as conditions and methods of use of our products are beyond our control. All claims must be made within 30 days following the date of delivery. The prospective user must determine the suitability of our materials before adopting them on a commercial scale. Suggested uses of our products are not recommendations to use our products in violation of any patent or as a license under any patent of Rockland Immunochemicals, Inc. If you require a commercial license to use this material and do not have one, then return this material, unopened to: Rockland Inc., P.O. BOX 5199, Limerick, Pennsylvania, USA.