

Anti-RABBIT IgG (H&L) (GOAT) Antibody Alkaline Phosphatase Conjugated - 611-1502

Code: 611-1502

Size: 1 mg

Product Description: Anti-RABBIT IgG (H&L) (GOAT) Antibody Alkaline Phosphatase Conjugated - 611-1502

Concentration: 1.0 mg/mL by UV absorbance at 280 nm

PhysicalState: Liquid (sterile filtered)

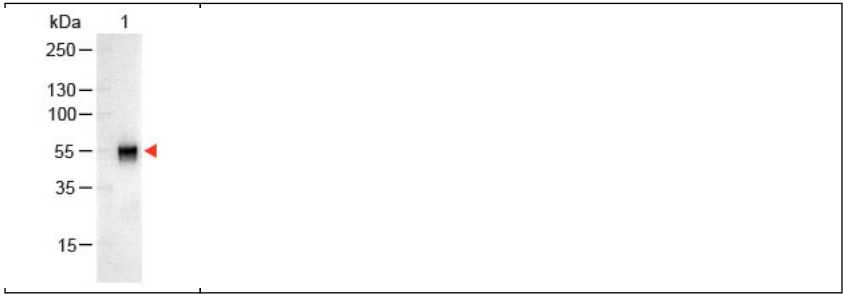
Label	Alkaline Phosphatase (Calf Intestine)
Host	Goat
Species Reactivity	Rabbit
Buffer	0.05 M Tris Chloride, 0.15M Sodium Chloride, 0.001M Magnesium Chloride, 0.0001M Zinc Chloride, 50% (v/v) Glycerol; pH 8.0
Stabilizer	10 mg/mL Bovine Serum Albumin (BSA) - Immunoglobulin and Protease free
Preservative	0.1% (w/v) Sodium Azide
Storage Condition	Store vial at 4° C before opening. DO NOT FREEZE. This product is stable at 4° C as an undiluted liquid. Dilute only prior to immediate use. Freezing alkaline phosphatase conjugates will result in a substantial loss of enzymatic activity.
Synonyms	Rabbit Antibody alkaline phosphatase conjugated, Gt-a-Rabbit alkaline phosphatase conjugated IgG, Rabbit alkaline phosphatase conjugated Antibody in Goat, Rabbit Secondary alkaline phosphatase conjugated Antibody, ALP, Alk Phos.
Application Note	Anti-Rabbit IgG alkaline phosphatase conjugated antibody is suitable for immunoblotting (western or dot blot), ELISA, immunohistochemistry as well as other alkaline phosphatase-antibody based enzymatic assays requiring lot-to-lot consistency.
Background	Anti-Rabbit IgG alkaline phosphatase conjugated antibody generated in goat detects specifically rabbit IgG. This secondary alkaline phosphatase conjugated antibody anti-Rabbit is ideal for investigators who routinely perform titration assays, western-blot, immunoprecipitation and more generally immunoassays.
Purity And Specificity	RABBIT IgG (H&L) Antibody Alkaline Phosphatase conjugated was prepared from monospecific antiserum by immunoaffinity chromatography using Rabbit IgG coupled to agarose beads followed by solid phase adsorption(s) to remove any unwanted reactivities. Assay by immunoelectrophoresis resulted in a single precipitin arc against anti-Alkaline Phosphatase (calf intestine), anti-Goat Serum, Rabbit IgG and Rabbit Serum.
Assay Dilutions	User Optimized
ELISA	1:3,000 - 1:25,000
Immunohistochemistry	1:200 - 1:1,000
WESTERN BLOT	1:1,000 - 1:4,000
IHC	1:200 - 1:1,000
OTHER ASSAYS	User Optimized
Expiration	Expiration date is one (1) year from date of opening.
Immunogen	Anti-Rabbit IgG (H&L) was produced by repeated immunization with rabbit whole IgG molecule in goat.

Related Products

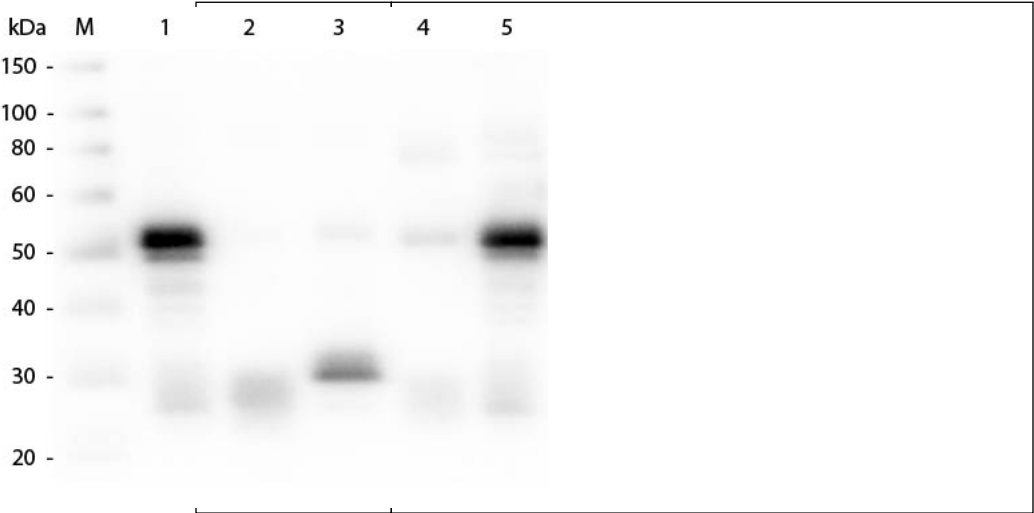
610-4302	Anti-MOUSE IgG (H&L) (RABBIT) Antibody Peroxidase Conjugated - 610-4302
611-1302	Anti-RABBIT IgG (H&L) (GOAT) Antibody Peroxidase Conjugated - 611-1302
B304	NORMAL GOAT SERUM (NGS) - B304
B501-0500	BLOTTO Immunoanalytical Grade (Non-Fat Dry Milk) - B501-0500

Related Links

1 Western Blot of Goat anti-Rabbit IgG Antibody Alkaline Phosphatase Conjugated.Lane 1: Rabbit IgG. Lane 2: None.Load: 100 ng per lane.Primary Antibody: None.Secondary antibody: Alkaline Phosphatase goat secondary antibody at 1:1,000 for 60 min at RT.Block: MB-070 for 30 min at RT.Predicted/Observed size: 55 and 28 kDa, 55 kDa for Rabbit IgG.Other Band(s): None.



2 Western Blot of Anti-Rabbit IgG (H&L) (GOAT) Antibody (p/n 611-1102). Lane M: 3 µl Molecular Ladder. Lane 1: Rabbit IgG whole molecule (p/n 011-0102). Lane 2: Rabbit IgG F(ab) Fragment (p/n 011-0105). Lane 3: Rabbit IgG F(c) Fragment (p/n 010-0103). Lane 4: Rabbit IgM Whole Molecule (p/n 011-0107). Lane 5: Normal Rabbit Serum (p/n B309). All samples were reduced. Load: 50 ng per lane. Block: MB-070 for 30 min at RT. Primary Antibody: Anti-Rabbit IgG (H&L) (GOAT) Antibody (p/n 611-1102) 1:1,000 for 60 min at RT. Secondary antibody: Anti-Goat IgG (DONKEY) Peroxidase Conjugated Antibody (p/n CUST10) 1:40,000 in MB-070 for 30 min at RT. Predicted/Obsevered Size: 25 and 50 kDa for Rabbit IgG and Serum, 25 kDa for F(c) and F(ab), 70 and 23 kDa for IgM. Rabbit F(c) migrates slightly higher.



3 Dot Blot of Rabbit IgG Antibody Alkaline Phosphatase Conjugated.Antigen: Rabbit IgG. Load: Lane 1 - 200ng Lane 2 - 66.7ng Lane 3 - 22.2ng Lane 4 - 7.4ng Lane 5 - 2.5ng.Primary antibody: none.Secondary antibody: Rabbit IgG Antibody Alkaline Phosphatase Conjugated at 1:1,000 for 60 min at RT.Block: MB-070 for 60 min at RT.Reaction visualized using alkaline phosphatase substrate for 30 seconds at RT.



Disclaimer

This product is for research use only and is not intended for therapeutic or diagnostic applications. Please contact a technical service representative for more information. All products of animal origin manufactured by Rockland Immunochemicals are derived from starting materials of North American origin. Collection was performed in United States Department of Agriculture (USDA) inspected facilities and all materials have been inspected and certified to be free of disease and suitable for exportation. All properties listed are typical characteristics and are not specifications. All suggestions and data are offered in good faith but without guarantee as conditions and methods of use of our products are beyond our control. All claims must be made within 30 days following the date of delivery. The prospective user must determine the suitability of our materials before adopting them on a commercial scale. Suggested uses of our products are not recommendations to use our products in violation of any patent or as a license under any patent of Rockland Immunochemicals, Inc. If you require a commercial license to use this material and do not have one, then return this material, unopened to: Rockland Inc., P.O. BOX 5199, Limerick, Pennsylvania, USA.