



## Anti-B-PHYCOERYTHRIN (RABBIT) Antibody - 200-401-099

**Code:** 200-401-099

**Size:** 100 µg

**Product Description:** Anti-B-PHYCOERYTHRIN (RABBIT) Antibody - 200-401-099

**Concentration:** 1.1 mg/ml by UV absorbance at 280 nm

**PhysicalState:** Liquid (sterile filtered)

<b>Label</b>	Unconjugated
<b>Host</b>	Rabbit
<b>Gene Name</b>	cpeA, cpeB
<b>Buffer</b>	0.02 M Potassium Phosphate, 0.15 M Sodium Chloride, pH 7.2
<b>Stabilizer</b>	None
<b>Preservative</b>	0.01% (w/v) Sodium Azide
<b>Storage Condition</b>	Store vial at -20° C prior to opening. Aliquot contents and freeze at -20° C or below for extended storage. Avoid cycles of freezing and thawing. Centrifuge product if not completely clear after standing at room temperature. This product is stable for several weeks at 4° C as an undiluted liquid. Dilute only prior to immediate use.
<b>Application Note</b>	Suitable for immunomicroscopy and flow cytometry or FACS analysis as well as other antibody based fluorescent assays requiring lot-to-lot consistency.
<b>Purity And Specificity</b>	This product is an IgG fraction antibody purified from monospecific antiserum by a multi-step process which includes delipidation, salt fractionation and ion exchange chromatography followed by extensive dialysis against the buffer stated above. Assay by immunoelectrophoresis resulted in a single precipitin arc against anti-Rabbit Serum as well as purified and partially purified Phycoerythrin [Porphyrinium creumentum].
<b>Assay Dilutions</b>	User Optimized
<b>ELISA</b>	1:20,000 - 1:100,000
<b>Immunohistochemistry</b>	1:1,000 - 1:5,000
<b>WESTERN BLOT</b>	1:2,000 - 1:10,000
<b>IHC</b>	1:1,000 - 1:5,000
<b>OTHER ASSAYS</b>	User Optimized
<b>Expiration</b>	Expiration date is one (1) year from date of opening.
<b>Immunogen</b>	Phycoerythrin [Porphyrinium creumentum]

### Related Products

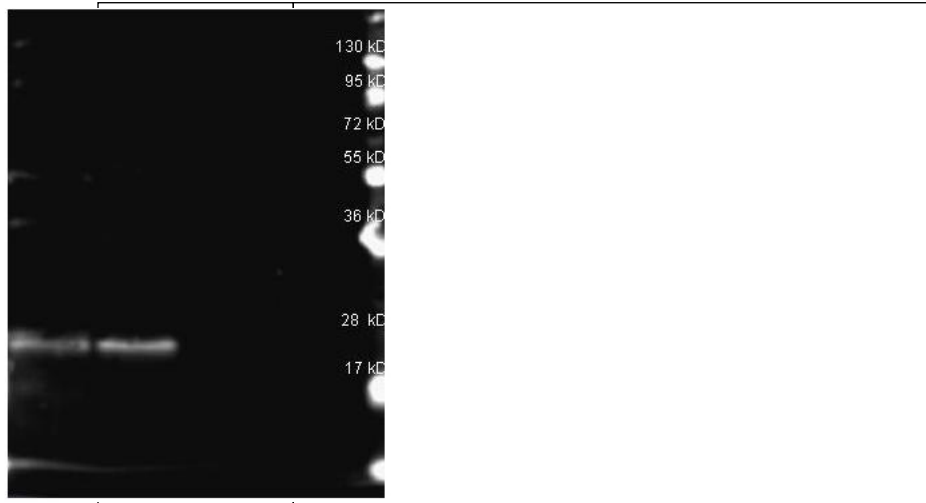
611-142-122	Anti-RABBIT IgG (H&L) (GOAT) Antibody DyLight™ 549 Conjugated (Min X Bv Ch Gt GP Ham Hs Hu Ms Rt & Sh Serum Proteins) - 611-142-122
611-157-122	Anti-RABBIT IgG (H&L) (GOAT) Antibody ATTO 655 Conjugated (Min X Bv Ch Gt GP Ham Hs Hu Ms Rt & Sh Serum Proteins) - 611-157-122
B304	NORMAL GOAT SERUM (NGS) - B304

### Related Links

### Images

1	Rockland Rabbit anti B-Phycoerythrin antibody (200-4199 lot 25411) was used to detect B-Phycoerythrin under reducing (R) conditions. Reduced samples of purified Phycoerythrin contained 4% BME and were boiled for 5 minutes. Samples of ~1ug of protein per lane were run by SDS-PAGE. Protein was transferred to nitrocellulose and probed with 1:1000 dilution of anti B-Phycoerythrin antibody (200-4199 lot 25411 ON 4 C) and detection was using Dylight 649 conjugated Donkey anti rabbit
---	---

(611-743-127 lot 20831 1:10K 1.5 hr RT in MB-070) and imaged on the BioRad VersaDoc System.



#### Disclaimer

This product is for research use only and is not intended for therapeutic or diagnostic applications. Please contact a technical service representative for more information. All products of animal origin manufactured by Rockland Immunochemicals are derived from starting materials of North American origin. Collection was performed in United States Department of Agriculture (USDA) inspected facilities and all materials have been inspected and certified to be free of disease and suitable for exportation. All properties listed are typical characteristics and are not specifications. All suggestions and data are offered in good faith but without guarantee as conditions and methods of use of our products are beyond our control. All claims must be made within 30 days following the date of delivery. The prospective user must determine the suitability of our materials before adopting them on a commercial scale. Suggested uses of our products are not recommendations to use our products in violation of any patent or as a license under any patent of Rockland Immunochemicals, Inc. If you require a commercial license to use this material and do not have one, then return this material, unopened to: Rockland Inc., P.O. BOX 5199, Limerick, Pennsylvania, USA.