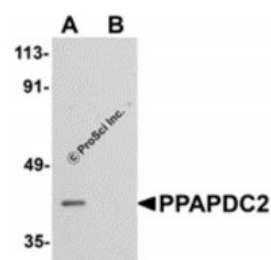


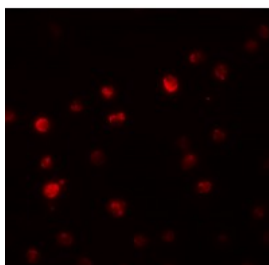


PPAPDC2 Antibody

CATALOG NUMBER: 5517



Western blot analysis of PPAPDC2 in Raji cell lysate with PPAPDC2 antibody at 1 ug/mL in (A) the absence and (B) the presence of blocking peptide.



Immunofluorescence of PPAPDC2 in Raji cells with PPAPDC2 antibody at 20 ug/mL.

Specifications

SPECIES REACTIVITY:	Human, Mouse, Rat
HOMOLOGY:	Predicted species reactivity based on immunogen sequence: Bovine: (93%)
TESTED APPLICATIONS:	ELISA, IF, WB
APPLICATIONS:	PPAPDC2 antibody can be used for detection of PPAPDC2 by Western blot at 1 ug/mL. For immunofluorescence start at 20 ug/mL.
USER NOTE:	Optimal dilutions for each application to be determined by the researcher.
POSITIVE CONTROL:	1) Cat. No. 1207 - Raji Cell Lysate
IMMUNOGEN:	PPAPDC2 antibody was raised against a 13 amino acid synthetic peptide from near the carboxy terminus human PPAPDC2. The immunogen is located within amino acids 170 - 220 of PPAPDC2.
HOST SPECIES:	Rabbit

Properties

PURIFICATION:	PPAPDC2 Antibody is affinity chromatography purified via peptide column.
PHYSICAL STATE:	Liquid
BUFFER:	PPAPDC2 Antibody is supplied in PBS containing 0.02% sodium azide.
CONCENTRATION:	1 mg/mL
STORAGE CONDITIONS:	PPAPDC2 antibody can be stored at 4°C for three months and -20°C, stable for up to one year. As with all antibodies care should be taken to avoid repeated freeze thaw cycles. Antibodies should not be exposed to prolonged high temperatures.
CLONALITY:	Polyclonal
ISOTYPE:	IgG
CONJUGATE:	Unconjugated

Additional Info

ALTERNATE NAMES:	PPAPDC2 Antibody: PDP1, PSDP, bA6J24.6, Presqualene diphosphate phosphatase, Phosphatidic acid phosphatase type 2 domain-containing protein 2, PPAP2 domain-containing protein 2
ACCESSION NO.:	NP_982278
PROTEIN GI NO.:	66773040
OFFICIAL SYMBOL:	PPAPDC2
GENE ID:	403313

Background

BACKGROUND: PPAPDC2 Antibody: PPAPDC2 is a phosphatase that dephosphorylates Presqualene diphosphate (PSDP) into presqualene monophosphate (PSMP), suggesting that it may have important role in innate immunity. PSDP is a bioactive lipid that rapidly remodels to PSMP upon cell activation. PPAPDC2 displays diphosphate phosphatase activity with a substrate preference for PSDP > FDP > phosphatidic acid. PPAPDC2 activity is independent of Mg²⁺ and has been identified in activated human neutrophil (PMN) extracts. It is widely expressed in human tissues. Recent studies shows PPAPDC2 is a functional isoprenoid diphosphate phosphatase.

REFERENCES:

- 1) Fukunaga K, Arita M, Takahashi M, et al. Identification and functional characterization of a presqualene diphosphate phosphatase. J. Biol. Chem.2006; 281:9490-7.
- 2) Miriyala S, Subramanian T, Panchatcharam M, et al. Functional characterization of the atypical integral membrane lipid phosphatase PDP1/PPAPDC2 identifies a pathway for interconversion of isoprenols and isoprenoid phosphates in mammalian cells. J. Biol. Chem.2010 (epub).

FOR RESEARCH USE ONLY

December 12, 2016