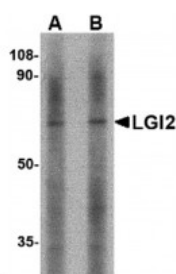


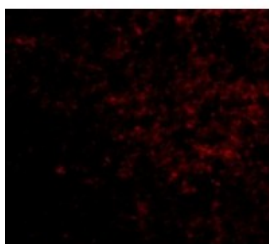


LGI2 Antibody

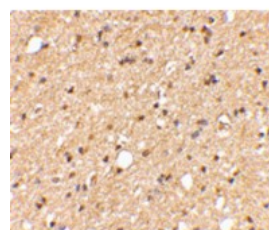
CATALOG NUMBER: 4533



Western blot analysis of LGI2 in mouse liver tissue lysate with LGI2 antibody at (A) 1 and (B) 2 ug/mL.



Immunofluorescence of LGI2 in Human Brain cells with LGI2 antibody at 5 ug/mL.



Immunohistochemical staining of human brain tissue using LGI2 antibody at 2.5 ug/mL.

Specifications

SPECIES REACTIVITY:	Human, Mouse
TESTED APPLICATIONS:	ELISA, IF, IHC-P, WB
APPLICATIONS:	LGI2 antibody can be used for the detection of LGI2 by Western blot at 1 - 2 ug/mL. Antibody can also be used for immunohistochemistry starting at 2.5 ug/mL. For immunofluorescence start at 5 ug/mL.
USER NOTE:	Optimal dilutions for each application to be determined by the researcher.
POSITIVE CONTROL:	1) Cat. No. 1404 - Mouse Liver Tissue Lysate
SPECIFICITY:	This LGI2 antibody is predicted to be specific to LGI2 and not recognize other LGI proteins. Three isoforms of LGI2 are known to exist; this LGI2 antibody will recognize only the longest.
IMMUNOGEN:	LGI2 antibody was raised against a 10 amino acid synthetic peptide from near the center of human LGI2. The immunogen is located within amino acids 290 - 340 of LGI2.
HOST SPECIES:	Rabbit

Properties

PURIFICATION:	LGI2 Antibody is affinity chromatography purified via peptide column.
PHYSICAL STATE:	Liquid
BUFFER:	LGI2 Antibody is supplied in PBS containing 0.02% sodium azide.
CONCENTRATION:	1 mg/mL
STORAGE CONDITIONS:	LGI2 antibody can be stored at 4°C for three months and -20°C, stable for up to one year. As with all antibodies care should be taken to avoid repeated freeze thaw cycles. Antibodies should not be exposed to prolonged high temperatures.
CLONALITY:	Polyclonal
ISOTYPE:	IgG
CONJUGATE:	Unconjugated

Additional Info

ALTERNATE NAMES:	LGI2 Antibody: mKIAA1916, Kiaa1916, Leucine-rich repeat LGI family member 2, Leucine-rich glioma-inactivated
-------------------------	--

	protein 2
ACCESSION NO.:	Q8N0V4
PROTEIN GI NO.:	32469737
OFFICIAL SYMBOL:	Lgi2
GENE ID:	246316

Background

BACKGROUND: LGI2 Antibody: The leucine-rich, glioma inactivated gene 2 (LGI2) is a member of the LGI family in which LGI1 is the exemplar. The LGI family consists of four of highly related proteins containing leucine-rich repeats (LRRs) which are highly similar to other transmembrane signaling molecules and receptors. LGI1 has been identified as a candidate tumor suppressor gene for glioma and plays a role in autodominate lateral temporal epilepsy (ADTLE), an epileptic syndrome characterized by focal seizures with predominant auditory symptoms. Despite its high homology with LGI1 and similar pattern of expression, mutations in LGI2 have not been found to be associated with ADTLE.

REFERENCES:

- 1) Gu W, Gibert Y, Wirth T, et al. Using gene-history and expression analysis to assess the involvement of LGI genes in human disorders. Mol. Biol. Evol.2005; 22:2209-16.
- 2) Chernova OB, Somerville RP and Cowell JK. A novel gene, LGI1, from 10q24 is rearranged and downregulated in malignant brain tumors. Oncogene1998; 17:2873-81.
- 3) Berkovic SF, Izzillo P, McMahon JM, et al. LGI1 mutations in temporal lobe epilepsies. Neurology2004; 62:1115-9.

FOR RESEARCH USE ONLY

December 13, 2016