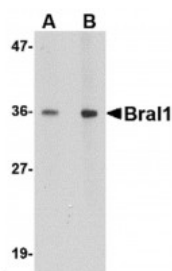




BRAL1 Antibody

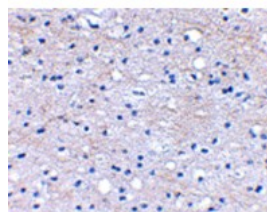
CATALOG NUMBER: 4501



Western blot analysis of BRAL1 in human brain tissue lysate with BRAL1 antibody at (A) 1 and (B) 2 ug/mL.



Immunofluorescence of BRAL1 in Human Brain cells with BRAL1 antibody at 20 ug/mL.



Immunohistochemical staining of human brain tissue using BRAL1 antibody at 2.5 ug/mL.

Specifications

SPECIES REACTIVITY:	Human, Mouse, Rat
TESTED APPLICATIONS:	ELISA, IF, IHC-P, WB
APPLICATIONS:	BRAL1 antibody can be used for the detection of BRAL1 by Western blot at 1 - 2 ug/mL. Antibody can also be used for immunohistochemistry starting at 2.5 ug/mL. For immunofluorescence start at 20 ug/mL.
USER NOTE:	Optimal dilutions for each application to be determined by the researcher.
POSITIVE CONTROL:	1) Cat. No. 1303 - Human Brain Tissue Lysate
IMMUNOGEN:	BRAL1 antibody was raised against a 12 amino acid synthetic peptide from near the center of human BRAL1. The immunogen is located within amino acids 130 - 180 of BRAL1.
HOST SPECIES:	Rabbit

Properties

PURIFICATION:	BRAL1 Antibody is affinity chromatography purified via peptide column.
PHYSICAL STATE:	Liquid
BUFFER:	BRAL1 Antibody is supplied in PBS containing 0.02% sodium azide.
CONCENTRATION:	1 mg/mL
STORAGE CONDITIONS:	BRAL1 antibody can be stored at 4°C for three months and -20°C, stable for up to one year. As with all antibodies care should be taken to avoid repeated freeze thaw cycles. Antibodies should not be exposed to prolonged high temperatures.
CLONALITY:	Polyclonal
ISOTYPE:	IgG
CONJUGATE:	Unconjugated

Additional Info

ALTERNATE NAMES:	BRAL1 Antibody: BRAL1, Hyaluronan and proteoglycan link protein 2, Brain link protein 1
ACCESSION NO.:	NP_068589

PROTEIN GI NO.:	11141887
OFFICIAL SYMBOL:	HAPLN2
GENE ID:	60484

Background

BACKGROUND: BRAL1 Antibody: BRAL1 is a member a superfamily consisting of several highly homologous hyaluronan and proteoglycan binding link proteins. BRAL1 is predominantly expressed in brain tissue and spinal cord. Like other members in the link-module superfamily, BRAL1 contains an immunoglobulin-like fold and two proteoglycan tandem repeats (PTRs). Its mRNA expression pattern is similar to other lectican proteoglycans, suggesting that BRAL1 may act to stabilize the binding between the extracellular matrix molecule hyaluronan and brevican. Immunostaining of mouse brain showed BRAL1 expression at P20 in the white matter of the developing cerebellum and in myelinated fiber tracts in the adult brain, suggesting that expression starts when axonal myelination occurs.

REFERENCES:

- 1) Spicer AP, Joo A, and Bowling Jr. RA. A hyaluronan binding link protein gene family whose members are physically linked adjacent to chondroitin sulfate proteoglycan core protein genes. J. Biol. Chem.2003; 278:21083-91.
- 2) Hirakawa S, Oohashi T, Su W-D, et al. The brain link protein-1 (BRAL1): cDNA cloning, genomic structure, and characterization as a novel link protein expressed in adult brain. Biochem. Biophys. Res. Comm.2000; 276:982-9.
- 3) Oohashi T, Hirakawa S, Bekku Y, et al. Bral1, a brain-specific link protein, colocalizing with the versican V2 isoform at the nodes of Ranvier in developing and adult mouse central nervous systems. Mol. Cell Neurosci.2002; 19:43-57.

FOR RESEARCH USE ONLY

December 13, 2016