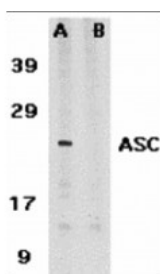


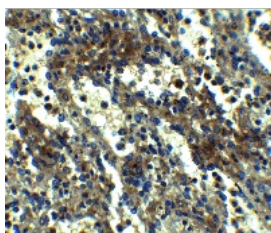


## ASC Antibody

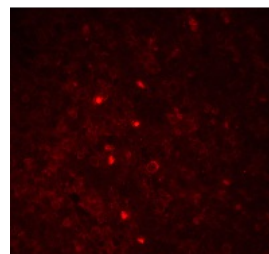
CATALOG NUMBER: 2287



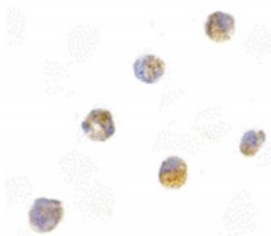
Western blot analysis of ASC in HL60 whole cell lysate in the absence (A) or presence (B) of blocking peptide with ASC antibody at 1 ug/ml.



Immunohistochemistry of ASC in human spleen tissue with ASC antibody at 2.5 ug/ml.



Immunofluorescence of ASC in human spleen tissue with ASC antibody at 20 ug/ml.



Immunocytochemistry of ASC in HL60 cells with ASC antibody at 5 ug/mL.

### Specifications

<b>SPECIES REACTIVITY:</b>	Human
<b>TESTED APPLICATIONS:</b>	ELISA, ICC, IHC-P, WB
<b>APPLICATIONS:</b>	ASC antibody can be used for detection of ASC/TMS1 by Western blot at 1 ug/mL. Antibody can also be used for immunocytochemistry starting at 5 ug/mL and immunohistochemistry starting at 2.5 ug/mL..
<b>USER NOTE:</b>	Optimal dilutions for each application to be determined by the researcher.
<b>POSITIVE CONTROL:</b>	1) Cat. No. 1209 - HL60 Cell Lysate
<b>PREDICTED MOLECULAR WEIGHT:</b>	25 kDa
<b>IMMUNOGEN:</b>	ASC antibody was raised against a 14 amino acid peptide near the carboxy terminus of human ASC .  The immunogen is located within the last 50 amino acids of ASC.
<b>HOST SPECIES:</b>	Rabbit

### Properties

<b>PURIFICATION:</b>	ASC Antibody is affinity chromatography purified via peptide column.
<b>PHYSICAL STATE:</b>	Liquid
<b>BUFFER:</b>	ASC Antibody is supplied in PBS containing 0.02% sodium azide.

<b>CONCENTRATION:</b>	1 mg/mL
<b>STORAGE CONDITIONS:</b>	ASC antibody can be stored at 4°C for three months and -20°C, stable for up to one year. As with all antibodies care should be taken to avoid repeated freeze thaw cycles. Antibodies should not be exposed to prolonged high temperatures.
<b>CLONALITY:</b>	Polyclonal
<b>ISOTYPE:</b>	IgG
<b>CONJUGATE:</b>	Unconjugated

#### Additional Info

<b>ALTERNATE NAMES:</b>	ASC Antibody: ASC, TMS, TMS1, CARD5, TMS-1, ASC, Apoptosis-associated speck-like protein containing a CARD, Caspase recruitment domain-containing protein 5, hASC
<b>ACCESSION NO.:</b>	BAA87339
<b>PROTEIN GI NO.:</b>	10801602
<b>OFFICIAL SYMBOL:</b>	PYCARD
<b>GENE ID:</b>	29108

#### Background

<b>BACKGROUND:</b>	ASC Antibody: Apoptosis is regulated by death domain (DD) and/or caspase recruitment domain (CARD) containing molecules and a caspase family of proteases. CARD containing cell death regulators include RAIDD, RICK, BCL10, Apaf-1, ARC, caspase-9, and caspase-2. A novel CARD domain containing protein was recently identified in human and mouse and designated ASC and TMS1. Ectopic expression of ASC/TMS1 induced apoptosis through activation of caspase-9 and inhibited the survival of human breast cancer cells (3, 4). Overexpression of ASC/TMS1 induced DNA fragmentation. ASC/TMS1 is expressed in a variety of human and mouse tissues.
<b>REFERENCES:</b>	<p>1) Masumoto J, Taniguchi S, Ayukawa K, Sarvotham H, Kishino T, Niikawa N, Hidaka E, Katsuyama T, Higuchi T, Sagara J. ASC, a novel 22-kDa protein, aggregates during apoptosis of human promyelocytic leukemia HL-60 cells. J Biol Chem. 1999;274(48):33835-8.</p> <p>2) Masumoto J, Taniguchi S, Nakayama K, Ayukawa K, Sagara J. Murine Ortholog of ASC, a CARD-Containing Protein, Self-Associates and Exhibits Restricted Distribution in Developing Mouse Embryos. Exp Cell Res. 2001;262(2):128-133.</p> <p>3) Conway KE, McConnell BB, Bowring CE, Donald CD, Warren ST, Vertino PM. TMS1, a novel proapoptotic caspase recruitment domain protein, is a target of methylation-induced gene silencing in human breast cancers. Cancer Res. 2000;60(22):6236-42.</p> <p>4) McConnell BB, Vertino PM. Activation of a caspase-9-mediated apoptotic pathway by subcellular redistribution of the novel caspase recruitment domain protein TMS1. Cancer Res. 2000;60(22):6243-7. (WD0102)</p>

#### FOR RESEARCH USE ONLY

December 12, 2016