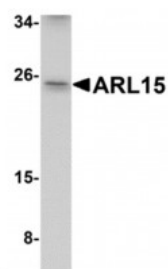


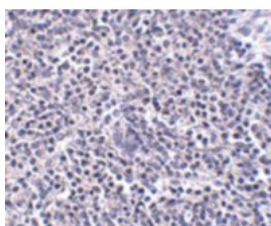


ARL15 Antibody

CATALOG NUMBER: 5263



Western blot analysis of ARL15 in K562 cell lysate with ARL15 antibody at 1 ug/mL.



Immunohistochemistry of ARL15 in human spleen tissue with ARL15 antibody at 5 ug/mL.

Specifications

SPECIES REACTIVITY:	Human, Mouse, Rat
HOMOLOGY:	Predicted species reactivity based on immunogen sequence: Bovine: (94%)
TESTED APPLICATIONS:	ELISA, IHC-P, WB
APPLICATIONS:	ARL15 antibody can be used for detection of Arl15 by Western blot at 1 ug/mL. Antibody can also be used for immunohistochemistry starting at 5 ug/mL.
USER NOTE:	Optimal dilutions for each application to be determined by the researcher.
POSITIVE CONTROL:	1) Cat. No. 1204 - K562 Cell Lysate
IMMUNOGEN:	ARL15 antibody was raised against a 17 amino acid synthetic peptide near the center of human ARL15. The immunogen is located within amino acids 130 - 180 of ARL15.
HOST SPECIES:	Rabbit

Properties

PURIFICATION:	ARL15 Antibody is affinity chromatography purified via peptide column.
PHYSICAL STATE:	Liquid
BUFFER:	ARL15 Antibody is supplied in PBS containing 0.02% sodium azide.
CONCENTRATION:	1 mg/mL
STORAGE CONDITIONS:	ARL15 antibody can be stored at 4°C for three months and -20°C, stable for up to one year. As with all antibodies care should be taken to avoid repeated freeze thaw cycles. Antibodies should not be exposed to prolonged high temperatures.
CLONALITY:	Polyclonal
ISOTYPE:	IgG
CONJUGATE:	Unconjugated

Additional Info

ALTERNATE NAMES:	ARL15 Antibody: ARFRP2, ARFRP2, ADP-ribosylation factor-like protein 15, ADP-ribosylation factor-related protein 2, ARF-related protein 2
-------------------------	-------------------------------------------------------------------------------------------------------------------------------------------

ACCESSION NO.:	NP_061960
PROTEIN GI NO.:	9506653
OFFICIAL SYMBOL:	ARL15
GENE ID:	54622

Background

BACKGROUND: ARL15 Antibody: ADP-ribosylation factors (ARFs) are highly conserved guanine nucleotide binding proteins that enhance the ADP-ribosyltransferase activity of cholera toxin. ARFs are important in eukaryotic vesicular trafficking pathways and they play an essential role in the activation of phospholipase D (PC-PLD). ARL15 (ADP-ribosylation factor-like 15), is a member of the ARF family of the Ras superfamily of small GTPases that are known to be involved in multiple regulatory pathways altered in human carcinogenesis. Other members of this protein family include ARL11, thought to be a tumor suppressor and may play a role in the regulation of apoptosis, ARL2 which plays an important role in microtubule dynamics and cell cycle progression, and ARL4, which may play a role in neurogenesis during embryonic development. The gene encoding ARL15 maps to chromosome 5p15 in humans. At least three isoforms of ARL15 are known to exist.

- REFERENCES:**
- 1) Pasqualato S, Renault L, and Cherfils J. ARF, ARL, ARP and SAR proteins: a family of GTP-binding proteins with a structural device for 'front-back' communication. EMBO Rep.2002; 3: 1035-41.
 - 2) Kahn RA, Volpicelli-Daley L, Bowzard B, et al. ARF family GTPases: roles in membrane traffic and microtubule dynamics. Biochem. Soc. Trans.2005; 33: 1269-72.
 - 3) Kahn RA, Cherfils J, Elias M, et al. Nomenclature for the human Arf family of GTP binding proteins: ARF, ARL, and SAR proteins. J. Cell Biol.2006; 172: 645-50.
 - 4) Calin GA, Trapasso F, Shimizu M, et al. Familial cancer associated with a polymorphism in ARLTS1. N. Engl. J. Med.2005; 352:1667-76.

FOR RESEARCH USE ONLY

December 13, 2016