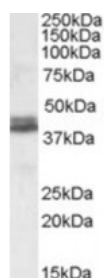




NDEL1 Antibody

CATALOG NUMBER: 46-929



Western blot analysis of NDEL1 in human cerebellum lysate (35 ug protein in RIPA buffer) using NDEL1 Antibody at 0.1 ug/mL.

Specifications

SPECIES REACTIVITY:	Human
TESTED APPLICATIONS:	ELISA, WB
APPLICATIONS:	ELISA: Antibody detection limit dilution 1:8,000. Western Blot: Approximately 38+39 kDa bands observed in human cerebellum lysates (calculated MW of 37.0 kDa according to NP_001020750.1 and of 38.4 kDa according to NP_110435.1).
POSITIVE CONTROL:	1) Cat. No. 1362 - Human Cerebellum, Left Lysate Cat. No. 1363 - Human Cerebellum, Right Lysate
SPECIFICITY:	This antibody is expected to recognize both reported isoforms (NP_001020750.1; NP_110435.1)
IMMUNOGEN:	NDEL1 antibody was raised against a 14 amino acid synthetic peptide near the internal region of NDEL1.
HOST SPECIES:	Goat

Properties

PURIFICATION:	NDEL1 antibody was purified from goat serum by ammonium sulphate precipitation followed by antigen affinity chromatography using the immunizing peptide.
PHYSICAL STATE:	Liquid
BUFFER:	NDEL1 antibody is supplied in Tris saline, 0.02% sodium azide, pH 7.3 with 0.5% bovine serum albumin.
CONCENTRATION:	500 ug/mL
STORAGE CONDITIONS:	Aliquot and store at -20°C. Minimize freezing and thawing.
CLONALITY:	Polyclonal
CONJUGATE:	Unconjugated

Additional Info

ALTERNATE NAMES:	NDEL1, nudE nuclear distribution gene E homolog (A. nidulans)-like 1, DKFZp451M0318, EOPA, MITAP1, NUDEL, NUDE-like protein, endooligopeptidase A, mitotin-associated protein MITAP1, nudE nuclear distribution gene E homolog like 1
ACCESSION NO.:	NP_001020750.1, NP_110435.1

PROTEIN GI NO.: 71284108

OFFICIAL SYMBOL: NDEL1

GENE ID: 81565

Background

REFERENCES: 1) Yingling J, Youn YH, Darling D, Toyo-Oka K, Pramparo T, Hirotsune S, Wynshaw-Boris A. Neuroepithelial stem cell proliferation requires LIS1 for precise spindle orientation and symmetric division. Cell 2008 Feb 132 (3): 474-86.

FOR RESEARCH USE ONLY

December 13, 2016