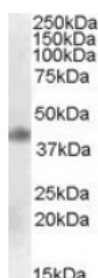




## MEIS1 Antibody

CATALOG NUMBER: 46-767



Western blot analysis of MEIS1 in mouse spleen lysate (35 ug protein in RIPA buffer) using MEIS1 Antibody at 1 ug/mL.

### Specifications

<b>SPECIES REACTIVITY:</b>	Human
<b>TESTED APPLICATIONS:</b>	ELISA, WB
<b>APPLICATIONS:</b>	ELISA: Antibody detection limit dilution 1:32,000. Western Blot: Approximately 40 kDa band observed in human cerebral cortex lysates (calculated MW of 43.0 kDa according to NP_002389.1). Recommended concentration: 0.1-0.3 ug/mL.
<b>POSITIVE CONTROL:</b>	1) Cat. No. 1406 - Mouse Spleen Tissue Lysate
<b>IMMUNOGEN:</b>	MEIS1 antibody was raised against a 13 amino acid synthetic peptide near the internal region of MEIS1.
<b>HOST SPECIES:</b>	Goat

### Properties

<b>PURIFICATION:</b>	MEIS1 antibody was purified from goat serum by ammonium sulphate precipitation followed by antigen affinity chromatography using the immunizing peptide.
<b>PHYSICAL STATE:</b>	Liquid
<b>BUFFER:</b>	MEIS1 antibody is supplied in Tris saline, 0.02% sodium azide, pH 7.3 with 0.5% bovine serum albumin.
<b>CONCENTRATION:</b>	500 ug/mL
<b>STORAGE CONDITIONS:</b>	Aliquot and store at -20°C. Minimize freezing and thawing.
<b>CLONALITY:</b>	Polyclonal
<b>CONJUGATE:</b>	Unconjugated

### Additional Info

<b>ALTERNATE NAMES:</b>	MEIS1, Meis homeobox 1, MGC43380, Meis1, myeloid ecotropic viral integration site 1 homolog, WUGSC:H_NH0444B04.1, leukemogenic homolog protein,
<b>ACCESSION NO.:</b>	NP_002389.1
<b>PROTEIN GI NO.:</b>	4505151
<b>OFFICIAL SYMBOL:</b>	MEIS1
<b>GENE ID:</b>	4211

## Background

**REFERENCES:** 1) Wong P, Iwasaki M, Somervaille TC, So CW, Cleary ML. Meis1 is an essential and rate-limiting regulator of MLL leukemia stem cell potential. Genes Dev. 2007 Nov 1;21(21):2762-74. Epub 2007 Oct 17. Erratum in: Genes Dev.

---

**FOR RESEARCH USE ONLY**

December 13, 2016