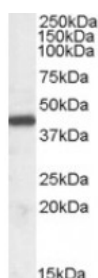




NF45 Antibody

CATALOG NUMBER: 46-677



Western blot analysis of NF45 in human tonsil lysate (35 ug protein in RIPA buffer) using NF45 Antibody at 0.03 ug/mL.

Specifications

SPECIES REACTIVITY:	Human
TESTED APPLICATIONS:	ELISA, IHC, WB
APPLICATIONS:	ELISA: Antibody detection limit dilution 1:4000. Western Blot: Approximately 43 kDa band observed in human tonsil and thymus lysates (calculated MW of 43.1 kDa according to NP_004506.2). Recommended concentration: 0.03-0.1 ug/mL.
POSITIVE CONTROL:	1) Cat. No. 1315 - Human Tonsil Tissue Lysate
IMMUNOGEN:	NF45 antibody was raised against a 13 amino acid synthetic peptide near the internal region (near the C-Terminus) of NF45.
HOST SPECIES:	Goat

Properties

PURIFICATION:	NF45 antibody was purified from goat serum by ammonium sulphate precipitation followed by antigen affinity chromatography using the immunizing peptide.
PHYSICAL STATE:	Liquid
BUFFER:	NF45 antibody is supplied in Tris saline, 0.02% sodium azide, pH 7.3 with 0.5% bovine serum albumin.
CONCENTRATION:	500 ug/mL
STORAGE CONDITIONS:	Aliquot and store at -20°C. Minimize freezing and thawing.
CLONALITY:	Polyclonal
CONJUGATE:	Unconjugated

Additional Info

ALTERNATE NAMES:	ILF2, interleukin enhancer binding factor 2, 45 kDa, MGC8391, NF45, PRO3063, nuclear factor of activated T-cells, 45- kDa
ACCESSION NO.:	NP_004506.2
PROTEIN GI NO.:	24234747
OFFICIAL SYMBOL:	ILF2

GENE ID: 3608

Background

REFERENCES: 1) Wang J, Rao S, Chu J, Shen X, Levasseur DN, Theunissen TW, Orkin SH. A protein interaction network for pluripotency of embryonic stem cells. *Nature*. 2006 Nov 16;444(7117):364-8. Epub 2006 Nov 8.

FOR RESEARCH USE ONLY

December 13, 2016