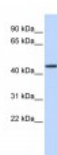


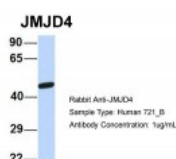


## JMJD4 Antibody

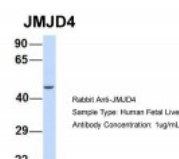
CATALOG NUMBER: 25-129



Antibody used in WB on Human Heart at 0.2-1 ug/ml.



Antibody used in WB on Human 721\_B at 1 ug/ml.



Antibody used in WB on Hum. Fetal Liver at 1 ug/ml.

### Specifications

<b>SPECIES REACTIVITY:</b>	Human
<b>TESTED APPLICATIONS:</b>	ELISA, WB
<b>APPLICATIONS:</b>	JMJD4 antibody can be used for detection of JMJD4 by ELISA at 1:12500. JMJD4 antibody can be used for detection of JMJD4 by western blot at 1 ug/mL, and HRP conjugated secondary antibody should be diluted 1:50,000 - 100,000.
<b>USER NOTE:</b>	Optimal dilutions for each application to be determined by the researcher.
<b>POSITIVE CONTROL:</b>	1) Cat. No. XBL-10407 - Fetal Heart Tissue Lysate
<b>PREDICTED MOLECULAR WEIGHT:</b>	52 kDa
<b>IMMUNOGEN:</b>	Antibody produced in rabbits immunized with a synthetic peptide corresponding a region of human JMJD4.
<b>HOST SPECIES:</b>	Rabbit

### Properties

<b>PURIFICATION:</b>	Antibody is purified by peptide affinity chromatography method.
<b>PHYSICAL STATE:</b>	Lyophilized
<b>BUFFER:</b>	Antibody is lyophilized in PBS buffer with 2% sucrose. Add 50 uL of distilled water. Final antibody concentration is 1 mg/mL.
<b>CONCENTRATION:</b>	1 mg/ml
<b>STORAGE CONDITIONS:</b>	For short periods of storage (days) store at 4°C. For longer periods of storage, store JMJD4 antibody at -20°C. As with any antibody avoid repeat freeze-thaw cycles.
<b>CLONALITY:</b>	Polyclonal
<b>CONJUGATE:</b>	Unconjugated

### Additional Info

<b>ALTERNATE NAMES:</b>	JMJD4, FLJ12517, MGC129896,
<b>ACCESSION NO.:</b>	NP_075383
<b>PROTEIN GI NO.:</b>	239788847

**OFFICIAL SYMBOL:** JMJD4

**GENE ID:** 65094

**Background**

**BACKGROUND:** The function of JMJD4 remains unknown.

**REFERENCES:** 1) Ota, T., (2004) Nat. Genet. 36 (1), 40-45.

**FOR RESEARCH USE ONLY**

December 12, 2016