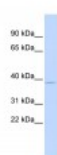


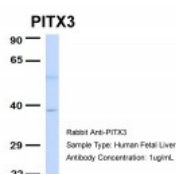


## PITX3 Antibody

CATALOG NUMBER: 25-110



Antibody used in WB on Human Liver at 0.2-1 ug/ml.



Antibody used in WB on Hum. Fetal Liver at 1 ug/ml.

### Specifications

<b>SPECIES REACTIVITY:</b>	Human, Mouse, Rat
<b>TESTED APPLICATIONS:</b>	ELISA, WB
<b>APPLICATIONS:</b>	PITX3 antibody can be used for detection of PITX3 by ELISA at 1:312500. PITX3 antibody can be used for detection of PITX3 by western blot at 1 ug/mL, and HRP conjugated secondary antibody should be diluted 1:50,000 - 100,000.
<b>USER NOTE:</b>	Optimal dilutions for each application to be determined by the researcher.
<b>POSITIVE CONTROL:</b>	1) Cat. No. XBL-10409 - Fetal Liver Tissue Lysate
<b>PREDICTED MOLECULAR WEIGHT:</b>	32 kDa
<b>IMMUNOGEN:</b>	Antibody produced in rabbits immunized with a synthetic peptide corresponding a region of human PITX3.
<b>HOST SPECIES:</b>	Rabbit

### Properties

<b>PURIFICATION:</b>	Antibody is purified by peptide affinity chromatography method.
<b>PHYSICAL STATE:</b>	Lyophilized
<b>BUFFER:</b>	Antibody is lyophilized in PBS buffer with 2% sucrose. Add 50 uL of distilled water. Final antibody concentration is 1 mg/mL.
<b>CONCENTRATION:</b>	1 mg/ml
<b>STORAGE CONDITIONS:</b>	For short periods of storage (days) store at 4°C. For longer periods of storage, store PITX3 antibody at -20°C. As with any antibody avoid repeat freeze-thaw cycles.
<b>CLONALITY:</b>	Polyclonal
<b>CONJUGATE:</b>	Unconjugated

### Additional Info

<b>ALTERNATE NAMES:</b>	PITX3, CTPP4, MGC12766, PTX3, ASMD, CTRCT11
<b>ACCESSION NO.:</b>	NP_005020
<b>PROTEIN GI NO.:</b>	4826912

OFFICIAL SYMBOL: PITX3

GENE ID: 5309

## Background

**BACKGROUND:** PITX3 is a member of the RIEG/PITX homeobox family, which is in the bicoid class of homeodomain proteins. Members of this family act as transcription factors. Mutations of PITX3 have been associated with anterior segment mesenchymal dysgenesis (ASMD) and congenital cataracts. PITX3 is involved in lens formation during eye development. This gene encodes a member of the RIEG/PITX homeobox family, which is in the bicoid class of homeodomain proteins. Members of this family act as transcription factors. Mutations of this gene have been associated with anterior segment mesenchymal dysgenesis (ASMD) and congenital cataracts. This protein is involved in lens formation during eye development. This gene encodes a member of the RIEG/PITX homeobox family, which is in the bicoid class of homeodomain proteins. Members of this family act as transcription factors. This protein is involved in lens formation during eye development. Mutations of this gene have been associated with anterior segment mesenchymal dysgenesis and congenital cataracts. Publication Note: This RefSeq record includes a subset of the publications that are available for this gene. Please see the Entrez Gene record to access additional publications.

**REFERENCES:** 1) Bergman, O., (er) Neurobiol. Aging (2008) In press.

FOR RESEARCH USE ONLY

December 12, 2016