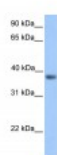




NEUROD6 Antibody

CATALOG NUMBER: 25-065



Antibody used in WB on Transfected 293T
at 0.2-1 ug/ml.

Specifications

SPECIES REACTIVITY:	Human
TESTED APPLICATIONS:	ELISA, WB
APPLICATIONS:	NEUROD6 antibody can be used for detection of NEUROD6 by ELISA at 1:62500. NEUROD6 antibody can be used for detection of NEUROD6 by western blot at 1 ug/mL, and HRP conjugated secondary antibody should be diluted 1:50,000 - 100,000.
USER NOTE:	Optimal dilutions for each application to be determined by the researcher.
POSITIVE CONTROL:	1) Transfected 293T Cell Lysate
PREDICTED MOLECULAR WEIGHT:	39 kDa
IMMUNOGEN:	Antibody produced in rabbits immunized with a synthetic peptide corresponding a region of human NEUROD6.
HOST SPECIES:	Rabbit

Properties

PURIFICATION:	Antibody is purified by peptide affinity chromatography method.
PHYSICAL STATE:	Lyophilized
BUFFER:	Antibody is lyophilized in PBS buffer with 2% sucrose. Add 50 uL of distilled water. Final antibody concentration is 1 mg/mL.
CONCENTRATION:	1 mg/ml
STORAGE CONDITIONS:	For short periods of storage (days) store at 4°C. For longer periods of storage, store NEUROD6 antibody at -20°C. As with any antibody avoid repeat freeze-thaw cycles.
CLONALITY:	Polyclonal
CONJUGATE:	Unconjugated

Additional Info

ALTERNATE NAMES:	NEUROD6, Atoh2, MATH2, Math-2, NEX1M, Nex1, bHLHa2
ACCESSION NO.:	NP_073565
PROTEIN GI NO.:	27475985

OFFICIAL SYMBOL: NEUROD6

GENE ID: 63974

Background

BACKGROUND: NEUROD6 contains 1 basic helix-loop-helix (bHLH) domain. It activates E box-dependent transcription in collaboration with TCF3/E47 and may be a trans-acting factor involved in the development and maintenance of the mammalian nervous system. It transactivates the promoter of its own gene. NEUROD6 is a member of the NEUROD (NEUROD1; MIM 601724) family of basic helix-loop-helix (bHLH) transcription factors (Guo et al., 2002 [PubMed 12357074]).

REFERENCES: 1) Satou, W., (2004) Exp. Gerontol. 39 (2), 173-179.

FOR RESEARCH USE ONLY

December 12, 2016