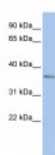




SIX3 Antibody

CATALOG NUMBER: 25-062



Antibody used in WB on Human HepG2 at
0.2-1 ug/ml.

Specifications

SPECIES REACTIVITY:	Human
TESTED APPLICATIONS:	ELISA, WB
APPLICATIONS:	SIX3 antibody can be used for detection of SIX3 by ELISA at 1:62500. SIX3 antibody can be used for detection of SIX3 by western blot at 1 ug/mL, and HRP conjugated secondary antibody should be diluted 1:50,000 - 100,000.
USER NOTE:	Optimal dilutions for each application to be determined by the researcher.
POSITIVE CONTROL:	1) Cat. No. 1211 - HepG2 Cell Lysate
PREDICTED MOLECULAR WEIGHT:	35 kDa
IMMUNOGEN:	Antibody produced in rabbits immunized with a synthetic peptide corresponding a region of human SIX3.
HOST SPECIES:	Rabbit

Properties

PURIFICATION:	Antibody is purified by peptide affinity chromatography method.
PHYSICAL STATE:	Lyophilized
BUFFER:	Antibody is lyophilized in PBS buffer with 2% sucrose. Add 50 uL of distilled water. Final antibody concentration is 1 mg/mL.
CONCENTRATION:	1 mg/ml
STORAGE CONDITIONS:	For short periods of storage (days) store at 4°C. For longer periods of storage, store SIX3 antibody at -20°C. As with any antibody avoid repeat freeze-thaw cycles.
CLONALITY:	Polyclonal
CONJUGATE:	Unconjugated

Additional Info

ALTERNATE NAMES:	SIX3, HPE2
ACCESSION NO.:	NP_005404
PROTEIN GI NO.:	4885597
OFFICIAL SYMBOL:	SIX3

GENE ID: 6496

Background

BACKGROUND: SIX3 belongs to the SIX/Sine oculis homeobox family. It contains 1 homeobox DNA-binding domain. SIX3 may be involved in visual system development.

REFERENCES: 1) Appolloni, I., (2008) Cereb. Cortex 18 (3), 553-562.

FOR RESEARCH USE ONLY

December 12, 2016