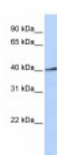




FOXL1 Antibody

CATALOG NUMBER: 25-025



Antibody used in WB on Human Jurkat
0.2-1 ug/ml.

Specifications

SPECIES REACTIVITY:	Human
TESTED APPLICATIONS:	ELISA, WB
APPLICATIONS:	FOXL1 antibody can be used for detection of FOXL1 by ELISA at 1:12500. FOXL1 antibody can be used for detection of FOXL1 by western blot at 1 ug/mL, and HRP conjugated secondary antibody should be diluted 1:50,000 - 100,000.
USER NOTE:	Optimal dilutions for each application to be determined by the researcher.
POSITIVE CONTROL:	1) Cat. No. 1205 - Jurkat Cell Lysate
PREDICTED MOLECULAR WEIGHT:	36 kDa
IMMUNOGEN:	Antibody produced in rabbits immunized with a synthetic peptide corresponding a region of human FOXL1.
HOST SPECIES:	Rabbit

Properties

PURIFICATION:	Antibody is purified by peptide affinity chromatography method.
PHYSICAL STATE:	Lyophilized
BUFFER:	Antibody is lyophilized in PBS buffer with 2% sucrose. Add 50 uL of distilled water. Final antibody concentration is 1 mg/mL.
CONCENTRATION:	1 mg/ml
STORAGE CONDITIONS:	For short periods of storage (days) store at 4°C. For longer periods of storage, store FOXL1 antibody at -20°C. As with any antibody avoid repeat freeze-thaw cycles.
CLONALITY:	Polyclonal
CONJUGATE:	Unconjugated

Additional Info

ALTERNATE NAMES:	FOXL1, FKH6, FKHL11, FREAC7
ACCESSION NO.:	NP_005241
PROTEIN GI NO.:	22779860

OFFICIAL SYMBOL: FOXL1

GENE ID: 2300

Background

BACKGROUND: The exact function of FOXL1 remains unknown.

REFERENCES: 1) Hassel, S., (2004) Proteomics 4 (5), 1346-1358.

FOR RESEARCH USE ONLY

December 12, 2016