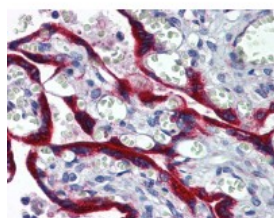




Fibrillin 1 Antibody [3H6]

CATALOG NUMBER: 51-945



Immunohistochemistry of human placenta tissue stained using Fibrillin 1 Monoclonal Antibody.

Specifications

SPECIES REACTIVITY:	Human
TESTED APPLICATIONS:	ELISA, IHC, WB
APPLICATIONS:	Fibrillin 1 antibody can be used in Western Blot, and immunohistochemistry starting at 1:50.
USER NOTE:	Optimal dilutions for each application to be determined by the researcher.
IMMUNOGEN:	FBN1 (NP_000129, 2772 a.a. ~ 2872 a.a) partial recombinant protein with GST tag. MW of the GST tag alone is 26 KDa.
HOST SPECIES:	Mouse

Properties

PURIFICATION:	Protein A Column
PHYSICAL STATE:	Liquid
BUFFER:	PBS, pH 7.2
CONCENTRATION:	0.48 mg/ml
STORAGE CONDITIONS:	Aliquot and store Fibrillin 1 antibody at -20 °C or -80 °C. As with all antibodies avoid freeze/thaw cycles.
CLONALITY:	Monoclonal
ISOTYPE:	IgG2a,k
CONJUGATE:	Unconjugated

Additional Info

ALTERNATE NAMES:	FBN1, ACMICD, Fibrillin 1, Fibrillin-1, FBN, ECTOL1, GPHYSD2, MASS, MFS1, OCTD, SSKS, WMS2, Fibrillin 1 (Marfan syndrome), Fibrillin 15, SGS, WMS
ACCESSION NO.:	P35555
PROTEIN GI NO.:	311033452
OFFICIAL SYMBOL:	FBN1
GENE ID:	2200

FOR RESEARCH USE ONLY

December 13, 2016