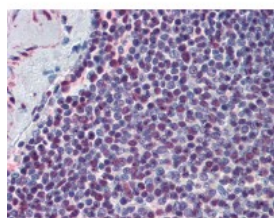




EP300 Antibody [1D2]

CATALOG NUMBER: 51-943



Immunohistochemistry of human spleen tissue stained using EP300 Monoclonal Antibody.

Specifications

SPECIES REACTIVITY:	Human
TESTED APPLICATIONS:	ELISA, IF, IHC, WB
APPLICATIONS:	EP300 antibody can be used in Western Blot, and immunohistochemistry starting at 1:50.
USER NOTE:	Optimal dilutions for each application to be determined by the researcher.
IMMUNOGEN:	EP300 (NP_001420, 731 a.a. ~ 831 a.a) partial recombinant protein with GST tag. MW of the GST tag alone is 26 KDa.
HOST SPECIES:	Mouse

Properties

PURIFICATION:	Protein A Column
PHYSICAL STATE:	Liquid
BUFFER:	PBS, pH 7.2
STORAGE CONDITIONS:	Aliquot and store EP300 antibody at -20 °C or -80 °C. As with all antibodies avoid freeze/thaw cycles.
CLONALITY:	Monoclonal
ISOTYPE:	IgG1
CONJUGATE:	Unconjugated

Additional Info

ALTERNATE NAMES:	EP300, E1A binding protein p300, Histone acetyltransferase p300, KAT3B, p300 HAT, E1A-associated protein p300, E1A-binding protein, 300kD, p300, RSTS2
ACCESSION NO.:	Q09472
PROTEIN GI NO.:	223590203
OFFICIAL SYMBOL:	EP300
GENE ID:	2033

Background

