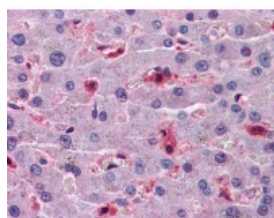




Hepcidin Antibody [1F9]

CATALOG NUMBER: 51-590



Immunohistochemistry of human liver tissue stained using Hepcidin Monoclonal Antibody.

Specifications

SPECIES REACTIVITY:	Human
TESTED APPLICATIONS:	ELISA, IHC, WB
APPLICATIONS:	Hepcidin antibody can be used in Western Blot, immunohistochemistry starting at 1:50, and immunoprecipitation.
USER NOTE:	Optimal dilutions for each application to be determined by the researcher.
IMMUNOGEN:	HAMP (AAH20612, 25 a.a. ~ 85 a.a) full length recombinant protein with GST tag. MW of the GST tag alone is 26 KDa.
HOST SPECIES:	Mouse

Properties

PURIFICATION:	Protein A Column
PHYSICAL STATE:	Liquid
BUFFER:	PBS, pH 7.2
STORAGE CONDITIONS:	Store Hepcidin antibody at 4 °C or -20 °C. As with all antibodies avoid freeze/thaw cycles.
CLONALITY:	Monoclonal
ISOTYPE:	IgG1,k
CONJUGATE:	Unconjugated

Additional Info

ALTERNATE NAMES:	HAMP, Hepcidin antimicrobial peptide, LEAP-1, LEAP1, HEPC, Hepcidin, HFE2B, PLTR, Putative liver tumor regressor
ACCESSION NO.:	P81172
PROTEIN GI NO.:	10720397
OFFICIAL SYMBOL:	HAMP
GENE ID:	57817

Background

