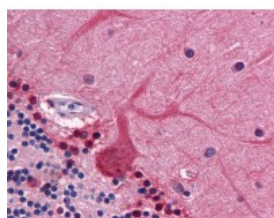




CORO1B Antibody [1E7]

CATALOG NUMBER: 51-589



Immunohistochemistry of human cerebellum tissue stained using CORO1B Monoclonal Antibody.

Specifications

SPECIES REACTIVITY:	Human
TESTED APPLICATIONS:	ELISA, IHC, WB
APPLICATIONS:	CORO1B antibody can be used in Western Blot, immunohistochemistry starting at 1:50, and immunoprecipitation.
USER NOTE:	Optimal dilutions for each application to be determined by the researcher.
IMMUNOGEN:	CORO1B (AAH06449, 1 a.a. ~ 490 a.a) full length recombinant protein with GST tag. MW of the GST tag alone is 26 KDa.
HOST SPECIES:	Mouse

Properties

PURIFICATION:	Protein A Column
PHYSICAL STATE:	Liquid
BUFFER:	PBS, pH 7.2
STORAGE CONDITIONS:	Store CORO1B antibody at -20 °C. Aliquot to avoid freeze/thaw cycles.
CLONALITY:	Monoclonal
ISOTYPE:	IgG1,k
CONJUGATE:	Unconjugated

Additional Info

ALTERNATE NAMES:	CORO1B, Coronin-1B, CORONIN-2
ACCESSION NO.:	Q9BR76
PROTEIN GI NO.:	21263481
OFFICIAL SYMBOL:	CORO1B
GENE ID:	57175

Background

