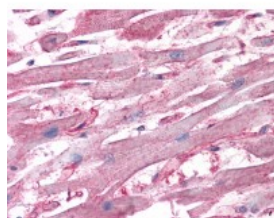




ATP6V1D Antibody [3G4]

CATALOG NUMBER: 51-582



Immunohistochemistry of human heart tissue stained using ATP6V1D Monoclonal Antibody.

Specifications

SPECIES REACTIVITY:	Human
TESTED APPLICATIONS:	ELISA, IHC, WB
APPLICATIONS:	ATP6V1D antibody can be used in Western Blot, and immunohistochemistry starting at 1:50.
USER NOTE:	Optimal dilutions for each application to be determined by the researcher.
IMMUNOGEN:	ATP6V1D (NP_057078, 69 a.a. ~ 169 a.a) partial recombinant protein with GST tag. MW of the GST tag alone is 26 KDa.
HOST SPECIES:	Mouse

Properties

PURIFICATION:	Protein A Column
PHYSICAL STATE:	Liquid
BUFFER:	PBS, pH 7.2
STORAGE CONDITIONS:	Store ATP6V1D antibody at -20 °C. Aliquot to avoid freeze/thaw cycles.
CLONALITY:	Monoclonal
ISOTYPE:	IgG2a,k
CONJUGATE:	Unconjugated

Additional Info

ALTERNATE NAMES:	ATP6V1D, ATP6M, V-ATPase subunit D, VPATPD, V-type proton ATPase subunit D, Vacuolar H-ATPase subunit D, Vacuolar proton pump D subunit, Vacuolar proton pump subunit D, VMA8, V-ATPase d subunit, Vacuolar ATPase subunit D, VATD
ACCESSION NO.:	Q9Y5K8
PROTEIN GI NO.:	10720351
OFFICIAL SYMBOL:	ATP6V1D
GENE ID:	51382

FOR RESEARCH USE ONLY

December 13, 2016