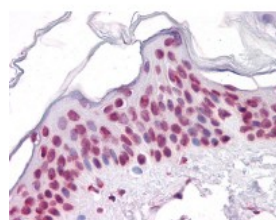




SIRT1 Antibody [7B7]

CATALOG NUMBER: 51-576



Immunohistochemistry of human skin tissue stained using SIRT1 Monoclonal Antibody.

Specifications

| | |
|-----------------------------|--|
| SPECIES REACTIVITY: | Human |
| TESTED APPLICATIONS: | ELISA, IF, IHC, WB |
| APPLICATIONS: | SIRT1 antibody can be used in ELISA, Western Blot, immunohistochemistry starting at 20 ug/mL, immunoprecipitation, and flow cytometry. |
| USER NOTE: | Optimal dilutions for each application to be determined by the researcher. |
| IMMUNOGEN: | SIRT1 (AAH12499, 456 a.a. ~ 555 a.a) partial recombinant protein with GST tag. MW of the GST tag alone is 26 KDa. |
| HOST SPECIES: | Mouse |

Properties

| | |
|----------------------------|--|
| PURIFICATION: | Protein A Column |
| PHYSICAL STATE: | Liquid |
| BUFFER: | PBS, pH 7.2 |
| STORAGE CONDITIONS: | Store SIRT1 antibody at 4 °C or -20 °C. As with all antibodies avoid freeze/thaw cycles. |
| CLONALITY: | Monoclonal |
| ISOTYPE: | IgG1,k |
| CONJUGATE: | Unconjugated |

Additional Info

| | |
|-------------------------|--|
| ALTERNATE NAMES: | SIRT1, SIR2-like protein 1, SIR2alpha, SIR2L1, Sirtuin 1, Sir2-like 1, Sirtuin type 1, HSIR2, HSIRT1 |
| ACCESSION NO.: | Q96EB6 |
| PROTEIN GI NO.: | 38258633 |
| OFFICIAL SYMBOL: | SIRT1 |
| GENE ID: | 23411 |

Background

