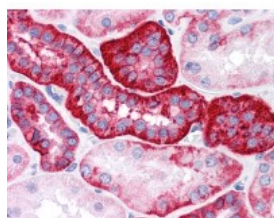




EPCAM Antibody [VU-1D9]

CATALOG NUMBER: 51-568



Immunohistochemistry of human kidney tissue stained using EPCAM Monoclonal Antibody.

Specifications

SPECIES REACTIVITY:	Human
TESTED APPLICATIONS:	FACS, ICC, IHC, IP, WB
APPLICATIONS:	FACS (1 - 3 ug/ml), ICC (4 ug/ml), IHC-Fr, IHC-P (10 ug/ml), IP, WB (1 - 4 ug/ml)
USER NOTE:	Optimal dilutions for each application to be determined by the researcher.
SPECIFICITY:	The mouse monoclonal antibody VU-1D9 recognizes an epitope within EGF-like domain I of CD326 / EpCAM, a marker of epithelial lineages. This antibody strongly stains various normal epithelial cells and carcinomas.
IMMUNOGEN:	Small cell lung carcinoma cell line H69.
HOST SPECIES:	Mouse

Properties

PURIFICATION:	Protein A Column
PHYSICAL STATE:	Liquid
BUFFER:	PBS, 15 mM sodium azide, pH 7.4
STORAGE CONDITIONS:	EPCAM antibody can be stored short term 4 °C. For long term storage aliquot and store at -20 °C. As with all antibodies avoid freeze/thaw cycles.
CLONALITY:	Monoclonal
ISOTYPE:	IgG1
CONJUGATE:	Unconjugated

Additional Info

ALTERNATE NAMES:	EPCAM, 323/A3, ACSTD1, 17-1A, CD326, EGP, EGP34, Epithelial glycoprotein, GA733-2, HNPCC8, Ep-CAM, ESA, HEGP314, KS 1/4 antigen, KS1/4, KSA, M1S2, MIC18, MK-1, MH99, TROP1, TACST-1, TACSTD1, CD326 antigen, CO-17A, DIAR5, EGP-2, EGP314, EGP40, Epithelial glycoprotein 314, HEA125, Ly74, M4S1, MOC31
ACCESSION NO.:	P16422
PROTEIN GI NO.:	160266056

OFFICIAL SYMBOL: EPCAM

GENE ID: 4072

Background

FOR RESEARCH USE ONLY

December 13, 2016