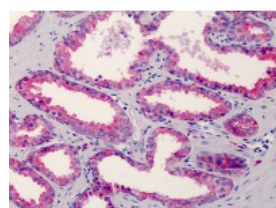




CD38 Antibody [HIT2]

CATALOG NUMBER: 51-558



Immunohistochemistry of human prostate tissue stained using CD38 Monoclonal Antibody.

Specifications

SPECIES REACTIVITY:	Human
TESTED APPLICATIONS:	FACS, IHC, WB
APPLICATIONS:	FACS, IHC-Fr, IHC-P (20 ug/ml), Inhb, WB (2 ug/ml)
USER NOTE:	Optimal dilutions for each application to be determined by the researcher.
SPECIFICITY:	Reacts with CD38 (T10), a 45 kD type II transmembrane glycoprotein strongly expressed mainly on plasma cells and activated T and B lymphocytes; it is an antigenic marker of lymphoid cells.
IMMUNOGEN:	Human thymocytes in fetus
HOST SPECIES:	Mouse

Properties

PURIFICATION:	Protein G Column
PHYSICAL STATE:	Liquid
BUFFER:	PBS, 15 mM sodium azide, approx., pH 7.4.
STORAGE CONDITIONS:	CD38 antibody can be stored short term 4 °C. For long term storage aliquot and store at -20 °C. As with all antibodies avoid freeze/thaw cycles.
CLONALITY:	Monoclonal
ISOTYPE:	IgG1
CONJUGATE:	Unconjugated

Additional Info

ALTERNATE NAMES:	CD38, ADP-ribosyl cyclase 1, CD38 antigen (p45), CD38 antigen, Cyclic ADP-ribose hydrolase 1, T10, CADPr hydrolase 1, CD38 molecule, NAD(+) nucleosidase
ACCESSION NO.:	P28907
PROTEIN GI NO.:	55977782
OFFICIAL SYMBOL:	CD38
GENE ID:	952

