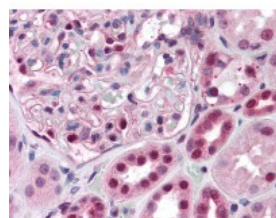




PAX7 Antibody [1E12]

CATALOG NUMBER: 51-495



Immunohistochemistry of human kidney tissue stained using PAX7 Monoclonal Antibody.

Specifications

SPECIES REACTIVITY:	Human, Mouse
TESTED APPLICATIONS:	ELISA, IHC, WB
APPLICATIONS:	PAX7 antibody can be used in Western Blot, and immunohistochemistry starting at 10 ug/mL.
USER NOTE:	Optimal dilutions for each application to be determined by the researcher.
IMMUNOGEN:	PAX7 (NP_002575, 411 a.a. ~ 521 a.a) partial recombinant protein with GST tag. MW of the GST tag alone is 26 KDa.
HOST SPECIES:	Mouse

Properties

PURIFICATION:	Protein A Column
PHYSICAL STATE:	Liquid
BUFFER:	PBS, pH 7.2
STORAGE CONDITIONS:	Store PAX7 antibody at -20 °C. Aliquot to avoid freeze/thaw cycles.
CLONALITY:	Monoclonal
ISOTYPE:	IgG2a,k
CONJUGATE:	Unconjugated

Additional Info

ALTERNATE NAMES:	PAX7, HUP1, Paired box 7, Paired box gene 7, Paired box homeotic gene 7, Paired box protein Pax-7, RMS2, Paired domain gene 7, PAX7 transcriptional factor, PAX7B
ACCESSION NO.:	P23759
PROTEIN GI NO.:	8247951
OFFICIAL SYMBOL:	PAX7
GENE ID:	5081

Background

