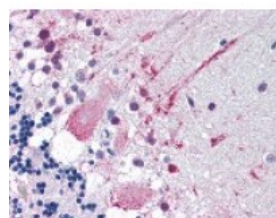




## MRGPRF Antibody

CATALOG NUMBER: 48-141



Immunohistochemistry staining of MRGPRF in cerebellum tissue using MRGPRF Antibody.

### Specifications

<b>SPECIES REACTIVITY:</b>	Gorilla, Human
<b>TESTED APPLICATIONS:</b>	IHC
<b>APPLICATIONS:</b>	MRGPRF antibody can be used in immunohistochemistry starting at 10 ug/mL, immunoprecipitation, and flow cytometry.
<b>USER NOTE:</b>	Optimal dilutions for each application to be determined by the researcher.
<b>SPECIFICITY:</b>	BLAST analysis of the peptide immunogen showed no homology with other human proteins.
<b>IMMUNOGEN:</b>	MRGPRF antibody was raised against a peptide located in the C-Terminal cytoplasmic domain of MRGPRF (Human).
<b>HOST SPECIES:</b>	Rabbit

### Properties

<b>PURIFICATION:</b>	Immunoaffinity Chromatography
<b>PHYSICAL STATE:</b>	Liquid
<b>BUFFER:</b>	PBS, 0.1% sodium azide.
<b>STORAGE CONDITIONS:</b>	MRGPRF antibody should be stored long term (months) at -80 °C and short term (days) at 4 °C. As with all antibodies avoid freeze/thaw cycles.
<b>CLONALITY:</b>	Polyclonal
<b>CONJUGATE:</b>	Unconjugated

### Additional Info

<b>ALTERNATE NAMES:</b>	MRGPRF, G protein-coupled receptor 168, G-protein coupled receptor 140, G-protein coupled receptor 168, GPR140, GPR168, MRGF, Mas-related gene F protein, G protein-coupled receptor 140, MAS-related GPR, member F, RTA
<b>ACCESSION NO.:</b>	Q96AM1
<b>PROTEIN GI NO.:</b>	24638055
<b>OFFICIAL SYMBOL:</b>	MRGPRF

GENE ID: 116535

---

### Background

**BACKGROUND:** MAS-related GPR, member F (MRGPRF) is an Orphan-U GPCR with an unknown ligand.

---

**FOR RESEARCH USE ONLY**

December 13, 2016