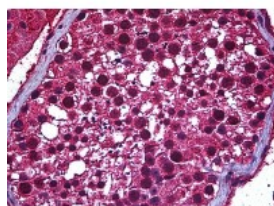




SP140 Antibody [3F9]

CATALOG NUMBER: 51-907



Immunohistochemistry of human testis tissue stained using SP140 Monoclonal Antibody.

Specifications

SPECIES REACTIVITY:	Human
TESTED APPLICATIONS:	ELISA, IHC
APPLICATIONS:	SP140 antibody can be used in Western Blot, and immunohistochemistry starting at 10 ug/mL.
USER NOTE:	Optimal dilutions for each application to be determined by the researcher.
IMMUNOGEN:	SP140 (NP_009168, 504 a.a. ~ 613 a.a) partial recombinant protein with GST tag. MW of the GST tag alone is 26 KDa.
HOST SPECIES:	Mouse

Properties

PURIFICATION:	Protein A Column
PHYSICAL STATE:	Liquid
BUFFER:	PBS, pH 7.2
STORAGE CONDITIONS:	SP140 antibody can be stored short term 4 °C. For long term storage aliquot and store at -20 °C. As with all antibodies avoid freeze/thaw cycles.
CLONALITY:	Monoclonal
ISOTYPE:	IgG2a,k
CONJUGATE:	Unconjugated

Additional Info

ALTERNATE NAMES:	SP140, Nuclear autoantigen Sp-140, Speckled 140 kDa, LYSP100, SP140 nuclear body protein, LYSP100-A, LYSP100-B, Nuclear body protein SP140
ACCESSION NO.:	Q13342
PROTEIN GI NO.:	218511671
OFFICIAL SYMBOL:	SP140
GENE ID:	11262

FOR RESEARCH USE ONLY

December 13, 2016