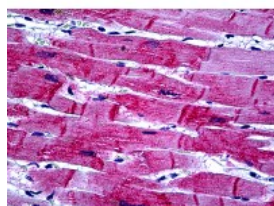




## HSPB8 Antibody [5B12]

CATALOG NUMBER: 51-751



Immunohistochemistry of human heart tissue stained using HSPB8 Monoclonal Antibody.

### Specifications

<b>SPECIES REACTIVITY:</b>	Human
<b>TESTED APPLICATIONS:</b>	ELISA, IHC, WB
<b>APPLICATIONS:</b>	HSPB8 antibody can be used in ELISA starting at 1 ug/mL, Western Blot starting at 1 ug/mL, and immunohistochemistry starting at 20 ug/mL.
<b>USER NOTE:</b>	Optimal dilutions for each application to be determined by the researcher.
<b>IMMUNOGEN:</b>	Recombinant protein
<b>HOST SPECIES:</b>	Mouse

### Properties

<b>PURIFICATION:</b>	Protein A Column
<b>PHYSICAL STATE:</b>	Liquid
<b>BUFFER:</b>	PBS, pH 7.2
<b>STORAGE CONDITIONS:</b>	HSPB8 antibody can be stored short term 4 °C. For long term storage aliquot and store at -20 °C. As with all antibodies avoid freeze/thaw cycles.
<b>CLONALITY:</b>	Monoclonal
<b>ISOTYPE:</b>	IgG2a,k
<b>CONJUGATE:</b>	Unconjugated

### Additional Info

<b>ALTERNATE NAMES:</b>	HSPB8, Alpha-crystallin C chain, CMT2L, Crystallin alpha c, DHM2, E2-induced gene 1 protein, CRYAC, E2IG1, HMN2, H11, Heat shock 27kDa protein 8, Heat shock protein beta-8, Heat shock 22kDa protein 8, HMN2A, HSP22, Protein kinase H11
<b>ACCESSION NO.:</b>	Q9UJY1
<b>PROTEIN GI NO.:</b>	13431576
<b>OFFICIAL SYMBOL:</b>	HSPB8
<b>GENE ID:</b>	26353

