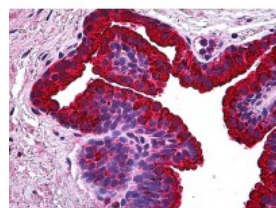




NABC1 Antibody [1B5]

CATALOG NUMBER: 51-730



Immunohistochemistry of human prostate tissue stained using NABC1 Monoclonal Antibody.

Specifications

SPECIES REACTIVITY:	Human
TESTED APPLICATIONS:	ELISA, IHC, WB
APPLICATIONS:	NABC1 antibody can be used in Western Blot starting at 0.5 - 2 ug/mL, and immunohistochemistry starting at 5 - 10 ug/mL.
USER NOTE:	Optimal dilutions for each application to be determined by the researcher.
IMMUNOGEN:	Recombinant protein
HOST SPECIES:	Mouse

Properties

PURIFICATION:	Protein A Column
PHYSICAL STATE:	Liquid
BUFFER:	PBS, pH 7.2
STORAGE CONDITIONS:	NABC1 antibody can be stored short term 4 °C. For long term storage aliquot and store at -20 °C. As with all antibodies avoid freeze/thaw cycles.
CLONALITY:	Monoclonal
ISOTYPE:	IgG2a,k
CONJUGATE:	Unconjugated

Additional Info

ALTERNATE NAMES:	BCAS1, AIBC1, NABC1
ACCESSION NO.:	O75363
PROTEIN GI NO.:	108935824
OFFICIAL SYMBOL:	BCAS1
GENE ID:	8537

Background

