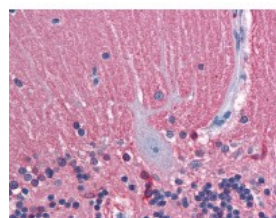




TUBB2A Antibody [2B2]

CATALOG NUMBER: 51-610



Immunohistochemistry of human cerebellum tissue stained using TUBB2A Monoclonal Antibody.

Specifications

SPECIES REACTIVITY:	Human, Mouse, Rat
TESTED APPLICATIONS:	ELISA, IHC, WB
APPLICATIONS:	TUBB2A antibody can be used in Western Blot, and immunohistochemistry starting at 1:50.
USER NOTE:	Optimal dilutions for each application to be determined by the researcher.
IMMUNOGEN:	TUBB2A (AAH01194, 1 a.a. ~ 446 a.a) full-length recombinant protein with GST tag. MW of the GST tag alone is 26 KDa.
HOST SPECIES:	Mouse

Properties

PURIFICATION:	Protein A Column
PHYSICAL STATE:	Liquid
BUFFER:	PBS, pH 7.2
STORAGE CONDITIONS:	Store TUBB2A antibody at -20 °C. Aliquot to avoid freeze/thaw cycles.
CLONALITY:	Monoclonal
ISOTYPE:	IgG2a,k
CONJUGATE:	Unconjugated

Additional Info

ALTERNATE NAMES:	TUBB2A, Class IIa beta-tubulin, DJ40E16.7, TUBB2, Tubulin beta-2A chain, Tubulin, beta 2, Tubulin, beta 2A, Tubulin, beta 2A class IIa, Beta-Tubulin, Tubulin beta-2 chain, Tubulin, beta polypeptide 2, Tubulin, beta polypeptide
ACCESSION NO.:	Q13885
PROTEIN GI NO.:	74762137
OFFICIAL SYMBOL:	TUBB2A
GENE ID:	7280

FOR RESEARCH USE ONLY

December 13, 2016