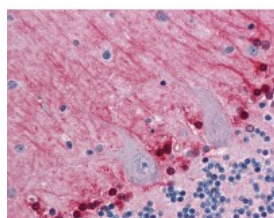




Glycogenin 1 Antibody [3B5]

CATALOG NUMBER: 51-462



Immunohistochemistry of human cerebellum tissue stained using Glycogenin 1 Monoclonal Antibody.

Specifications

SPECIES REACTIVITY:	Human, Rat
TESTED APPLICATIONS:	ELISA, IHC, WB
APPLICATIONS:	Glycogenin 1 antibody can be used in Western Blot, and immunohistochemistry starting at 10 ug/mL.
USER NOTE:	Optimal dilutions for each application to be determined by the researcher.
IMMUNOGEN:	GYG1 (NP_004121, 1 a.a. ~ 74 a.a) partial recombinant protein with GST tag. MW of the GST tag alone is 26 KDa.
HOST SPECIES:	Mouse

Properties

PURIFICATION:	Protein A Column
PHYSICAL STATE:	Liquid
BUFFER:	PBS, pH 7.2
STORAGE CONDITIONS:	Store Glycogenin 1 antibody at -20 °C. Aliquot to avoid freeze/thaw cycles.
CLONALITY:	Monoclonal
ISOTYPE:	IgG2a,k
CONJUGATE:	Unconjugated

Additional Info

ALTERNATE NAMES:	GYG1, Glycogenin, GSD15, GYG, Glycogenin 1, Glycogenin-1, GN-1, GN1
ACCESSION NO.:	P46976
PROTEIN GI NO.:	13432151
OFFICIAL SYMBOL:	GYG1
GENE ID:	2992

Background

