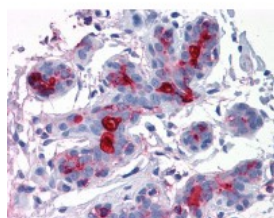




MUC1 Antibody, Monoclonal

CATALOG NUMBER: 51-418



Immunohistochemistry of human breast tissue stained using MUC1 Monoclonal Antibody.

Specifications

SPECIES REACTIVITY:	Human
TESTED APPLICATIONS:	ELISA, IHC
APPLICATIONS:	MUC1 antibody can be used in ELISA starting at 1:2000 - 1:10000, Western Blot starting at 1:500 - 1:3000, immunohistochemistry starting at 2.5 ug/mL, and immunofluorescence.
USER NOTE:	Optimal dilutions for each application to be determined by the researcher.
SPECIFICITY:	Recognizes underglycosylated and natural MUC1 protein (isolated from human milk by affinity chromatography)
IMMUNOGEN:	High molecular weight (>300kD) glycoprotein from human milk-fat globule molecule.
HOST SPECIES:	Mouse

Properties

PURIFICATION:	Protein A Column
PHYSICAL STATE:	Liquid
BUFFER:	PBS, pH 7.4, 0.1% sodium azide.
STORAGE CONDITIONS:	MUC1 antibody should be stored long term (months) at -20 °C and short term (weeks) at 4 °C. As with all antibodies avoid freeze/thaw cycles.
CLONALITY:	Monoclonal
ISOTYPE:	IgG
CONJUGATE:	Unconjugated

Additional Info

ALTERNATE NAMES:	MUC1, CA15-3, CD227, Carcinoma-associated mucin, CD227 antigen, DF3 antigen, Episialin, Epithelial membrane antigen, H23 antigen, H23AG, Krebs von den Lungen-6, MAM6, MUC1/ZD, MUC-1/SEC, Mucin-1, Pem, KL-6, MUC-1/X, Tumor-associated mucin, Peanut-reactive urinary mucin, Polymorphic epithelial mucin, PUM, EMA, MUC-1, Mucin 1, transmembrane
ACCESSION NO.:	P15941
PROTEIN GI NO.:	296439295

OFFICIAL SYMBOL: MUC1

GENE ID: 4582

Background

FOR RESEARCH USE ONLY

December 13, 2016