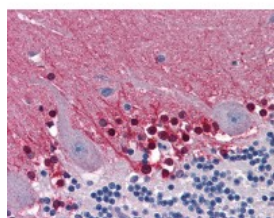




CBS Antibody [3E1]

CATALOG NUMBER: 51-893



Immunohistochemistry of human cerebellum tissue stained using CBS Monoclonal Antibody.

Specifications

| | |
|-----------------------------|--|
| SPECIES REACTIVITY: | Human, Rat |
| TESTED APPLICATIONS: | ELISA, IHC, IP, WB |
| APPLICATIONS: | CBS antibody can be used in ELISA, Western Blot, and immunohistochemistry starting at 2.5 ug/mL. |
| USER NOTE: | Optimal dilutions for each application to be determined by the researcher. |
| IMMUNOGEN: | CBS (NP_000062, 1 a.a. ~ 101 a.a) partial recombinant protein with GST tag. MW of the GST tag alone is 26 KDa. |
| HOST SPECIES: | Mouse |

Properties

| | |
|----------------------------|--|
| PURIFICATION: | Protein A Column |
| PHYSICAL STATE: | Liquid |
| BUFFER: | PBS, pH 7.2 |
| STORAGE CONDITIONS: | Aliquot and store CBS antibody at -20 °C or -80 °C. As with all antibodies avoid freeze/thaw cycles. |
| CLONALITY: | Monoclonal |
| ISOTYPE: | IgG2a,k |
| CONJUGATE: | Unconjugated |

Additional Info

| | |
|-------------------------|---|
| ALTERNATE NAMES: | CBS, Beta-thionase, Cystathionine beta-synthase, HIP4, Methylcysteine synthase, Serine sulphydrase, Cystathionine-beta-synthase |
| ACCESSION NO.: | P35520 |
| PROTEIN GI NO.: | 543959 |
| OFFICIAL SYMBOL: | CBS |
| GENE ID: | 875 |

Background

