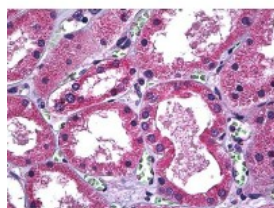




SLC11A2 Antibody [4C6]

CATALOG NUMBER: 51-777



Immunohistochemistry of human kidney tissue stained using SLC11A2 Monoclonal Antibody.

Specifications

SPECIES REACTIVITY:	Human
TESTED APPLICATIONS:	ELISA, IHC, WB
APPLICATIONS:	SLC11A2 antibody can be used in Western Blot starting at 1 - 2 ug/mL, immunohistochemistry starting at 5 ug/mL, immunoprecipitation, and flow cytometry starting at 1 ug/mL.
USER NOTE:	Optimal dilutions for each application to be determined by the researcher.
IMMUNOGEN:	Recombinant protein
HOST SPECIES:	Mouse

Properties

PURIFICATION:	Protein A Column
PHYSICAL STATE:	Liquid
BUFFER:	PBS, pH 7.2
CONCENTRATION:	0.36 mg/ml
STORAGE CONDITIONS:	SLC11A2 antibody can be stored short term 4 °C. For long term storage aliquot and store at -20 °C. As with all antibodies avoid freeze/thaw cycles.
CLONALITY:	Monoclonal
ISOTYPE:	IgG2a,k
CONJUGATE:	Unconjugated

Additional Info

ALTERNATE NAMES:	SLC11A2, Divalent metal transporter 1, Divalent cation transporter 1, DMT-1, NRAMP 2, NRAMP2, Dct-1, DCT1, DMT1
ACCESSION NO.:	P49281
PROTEIN GI NO.:	8247934
OFFICIAL SYMBOL:	SLC11A2
GENE ID:	4891

