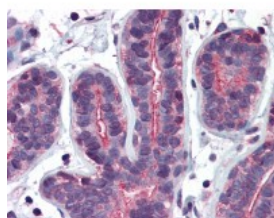




## RHOA Antibody [1C1]

CATALOG NUMBER: 51-882



Immunohistochemistry of human breast tissue stained using RHOA Monoclonal Antibody.

### Specifications

<b>SPECIES REACTIVITY:</b>	Human
<b>TESTED APPLICATIONS:</b>	ELISA, IHC, WB
<b>APPLICATIONS:</b>	RHOA antibody can be used in Western Blot, and immunohistochemistry starting at 5 ug/mL.
<b>USER NOTE:</b>	Optimal dilutions for each application to be determined by the researcher.
<b>IMMUNOGEN:</b>	RHOA (AAH01360, 1 a.a. ~ 194 a.a) full length recombinant protein with GST tag. MW of the GST tag alone is 26 KDa.
<b>HOST SPECIES:</b>	Mouse

### Properties

<b>PURIFICATION:</b>	Protein A Column
<b>PHYSICAL STATE:</b>	Liquid
<b>BUFFER:</b>	PBS, pH 7.2
<b>STORAGE CONDITIONS:</b>	Aliquot and store RHOA antibody at -20 °C or -80 °C. As with all antibodies avoid freeze/thaw cycles.
<b>CLONALITY:</b>	Monoclonal
<b>ISOTYPE:</b>	IgG1, $\kappa$
<b>CONJUGATE:</b>	Unconjugated

### Additional Info

<b>ALTERNATE NAMES:</b>	RHOA, ARH12, ARHA, Aplysia ras-related homolog 12, H12, Oncogene RHO H12, Rho cDNA clone 12, RHO12, RHOH12, Ras homolog family member A, Small GTP binding protein RhoA, Transforming protein RhoA
<b>ACCESSION NO.:</b>	P61586
<b>PROTEIN GI NO.:</b>	47606458
<b>OFFICIAL SYMBOL:</b>	RHOA
<b>GENE ID:</b>	387

### Background

